



The Toward Zero Deaths approach is based on the belief that even one traffic-related death on our roads is unacceptable. Minnesota has identified zero deaths as a core objective in their Strategic Highway Safety Plans.

The goal of this workshop presentation is to provide some perspective for the 4Es on commercial motor vehicles, and how to bridge the gap between the professional commercial vehicle driver and our drive towards zero traffic deaths.

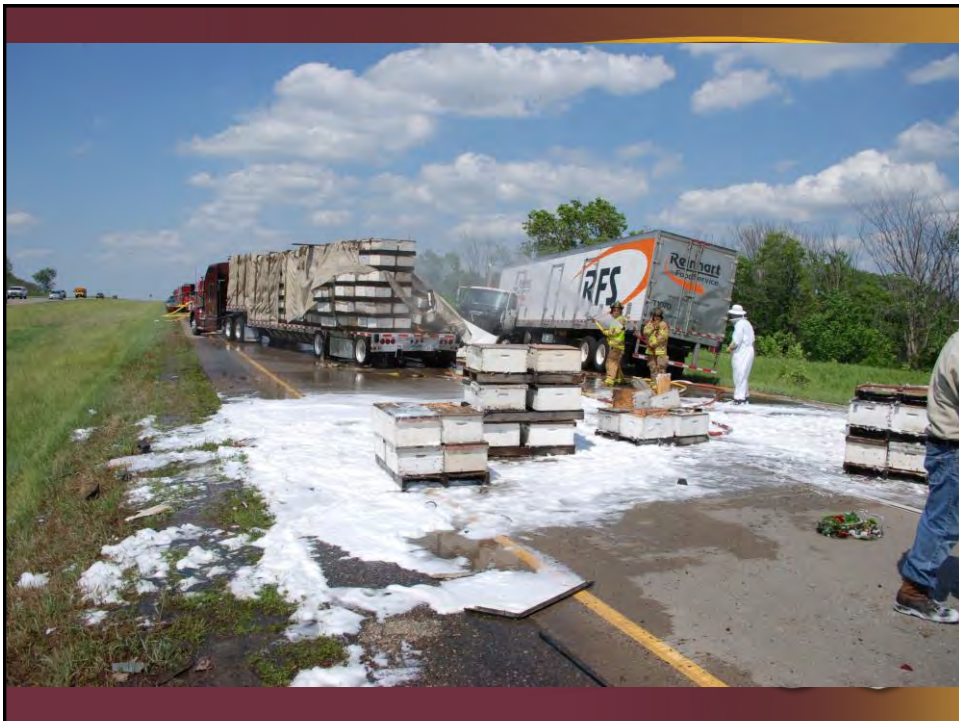


## QUIZ!

How many commercial motor vehicle involved fatalities did Minnesota have in calendar year 2017?

- A. 38
- B. 49
- C. 60
- D. 73
- E. 93





## EMS Considerations..... 17 Million angry bees



*Right, Scott Nelson, Lakeville fire chief, told the Minneapolis Star Tribune, "I saw this big black cloud... I opened up my door and got stung in the face by a couple of bees."*





## WE CAN BE TARGETS TOO



## WE CAN BE TARGETS TOO



27% of work zone crashes on a national level involve a CMV



## NATIONWIDE VS MINNESOTA

- Nationwide increase of 6% in CMV fatalities  
(despite an overall 2% decrease)
- Nationwide – 72% killed are in other vehicles
- Minnesota – 94% killed in multi unit crashes were other vehicles
- Minnesota – 78% of CMV fatalities occur in rural areas
- Minnesota – 77% of CMV crashes occur between 0600 and 1800, Monday thru Friday



## QUIZ!

How many commercial motor vehicles are currently registered in Minnesota?

- A. 163,000
- B. 241,000 ←
- C. 783,000
- D. 1.1 million
- E. 2.5 million ←



## COMMERCIAL MOTOR VEHICLES



Is This Is A CMV?



## COMMERCIAL MOTOR VEHICLES



Is This Is A CMV?



## COMMERCIAL MOTOR VEHICLES



Is This Is A CMV?





## CMV DEFINITION - MINNESOTA

- A vehicle or combination of motor vehicles used to transport passengers or property if the vehicle:
- Has a gross vehicle weight (GVW) greater than 26,000 lbs
- Has a towed unit GVW greater than 10,000 lbs and the combination weight is greater than 26,000 lbs
- Is a bus
- Any size vehicle used to transport a placardable amount of Hazardous Materials
- Is outwardly equipped and identified as a school bus



## CMV DEFINITION – FEDERAL (ADOPTED)

- Self propelled or towed motor vehicle used in interstate commerce (furtherance of business)
- Has a GVWR or GCWR or GVW or GCW of more than 10,000 lbs
- Designed or used to transport more than 8 passengers including driver for compensation
- Designed or used to transport more than 15 passengers including driver not for compensation
- Used to transport placardable amount of Hazardous Materials



## WHAT IS GROSS VEHICLE WEIGHT?

### The GREATER of:

- the unloaded weight of a vehicle or the unloaded weight of a truck-tractor and semitrailer combination, plus the weight of the load; or
- the value specified by the manufacturer as the maximum gross weight or gross vehicle weight rating.

\*MS 169.011, subdivision 32



## WHAT IS GROSS VEHICLE WEIGHT?

### Where to find the Gross Vehicle Weight Rating?

check around the driver's door area for the VIN sticker

INCOMPLETE VEHICLE MANUFACTURED BY FORD MOTOR COMPANY MADE IN U.S.A. 5808L				
GVWR: 56000 LB / 25401 KG				
VEHICLE IDENTIFICATION NUMBER 1FDZY82E0SVA74396				
EU 58				
EXTERIOR PAINT COLORS   DISTRICT   DSD				
HB	TYPE-GVM	BODY	TRANS	AXLE
239	Y82560	8		4Q
FGAWR 16000LB		RGAWR 40000LB		

MANUFACTURED BY	KP4011
Essee Corporation	
Kansas City, MO	6
DATE OF MANUFACTURE	
INCOMPLETE VEHICLE MANUFACTURED BY	
Navistar Internat'l Tr	
DATE INC. VEH. MFD	6
GVWR	32,200#
GAWR FRONT	11,000#
11R22.5 Bridgestone (1)	
22x2.5 rims @ 85 psi cold	
GAWR INTERMEDIATE (1)	
rims @ psi cold	
GAWR INTERMEDIATE (2)	
rims @ psi cold	
GAWR REAR	21,200#
11R22.5 Bridgestone C	
22x2.5 rims @ 90	

## STOPPING COMMERCIAL MOTOR VEHICLES

Keep it simple.....

- Choose a safe stopping location
- Driver's license and reason for the stop
- Log book? Health Card?
- Keep eyes and ears open and don't let yourself be overwhelmed. Stick to what you know.



## ENFORCEMENT

- Speed
- Seatbelt
- Distraction
- Impairment



## ENFORCEMENT

### Speed

- 55 miles per hour = 80 feet per second
- 65 miles per hour = 95 feet per second

Two lane highway in greater Minnesota.....



## ENFORCEMENT

Two lane highway in greater Minnesota.....



## ENFORCEMENT

Two lane highway in greater Minnesota.....

**80,000 pound CMV, with air brakes under ideal conditions:  
335 feet stopping distance at 55 miles per hour  
525 feet at 65 miles per hour**



## ENFORCEMENT

### Seatbelts

- Nationwide compliance = 84%
- 39% of CMV drivers killed in fatal crashes are not belted
- 80% of the industry wide fatalities are a result of traffic crashes



## ENFORCEMENT

### Distraction

- 2011, feds adopted into regulation “hands free” for CMV drivers
  - 49 CFR 392.80 (texting)
  - 49 CFR 392.82 (one touch dialing)
- Over 600 CMV inspections initiated due to cellphone use in Minnesota last year



## QUIZ!

### Impairment

– A CMV driver can legally operate up to what BAC Level?

- A. .00 ←
- B. .04 ←
- C. .06
- D. .08



## ENFORCEMENT

### Impairment

- It is illegal to operate a CMV above .00 (49 CFR 392.5)
- DWI law in MN applies to vehicles above 26,000 pounds (169A.20(1)(6))
- It is illegal to operate a CMV while in possession of alcohol that is not a part of the manifested load (49 CFR 392.5)



## ENFORCEMENT



# UNSAFE EQUIPMENT?



M.S. 169.47

06/04/2018



# PASSENGER VEHICLE ENFORCEMENT



FWD +0.05

LAT -0.04

TIME -11.25

63 MPH 101 km/h





## PASSENGER VEHICLE ENFORCEMENT



## PARTY BUSES

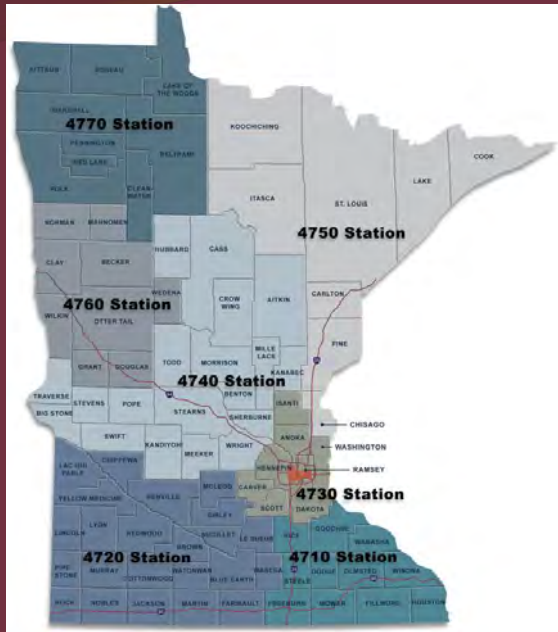


- Open bottle law doesn't apply to motor carrier of passengers – bus or limo (regulated by MnDOT)
- Insurance requirements – 1.5 million or 5 million





## STATE PATROL RESOURCES



## QUESTIONS?

Captain Jon Olsen  
Commercial Vehicle Section – District 4700  
1110 Centre Pointe Curve, Suite 410  
Mendota Heights, MN 55120  
Office: (651)350-2012  
[jonathan.olsen@state.mn.us](mailto:jonathan.olsen@state.mn.us)

