



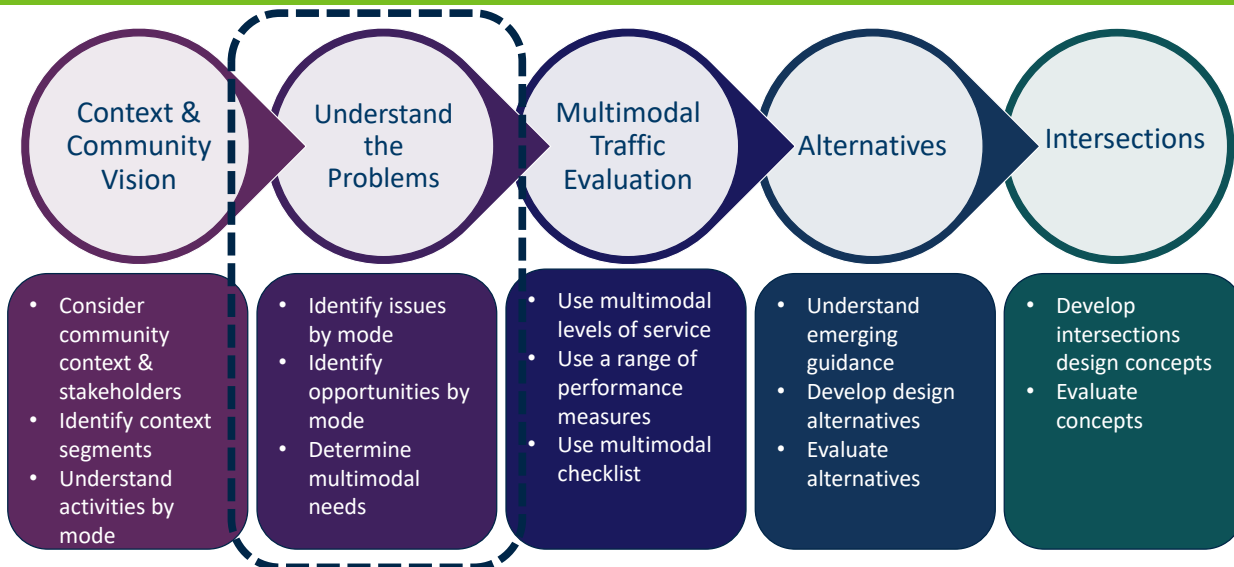
The Complete Streets Design Charrette Session 35

2017 Towards Zero Deaths Conference

Jack Broz, PE, City of Richfield



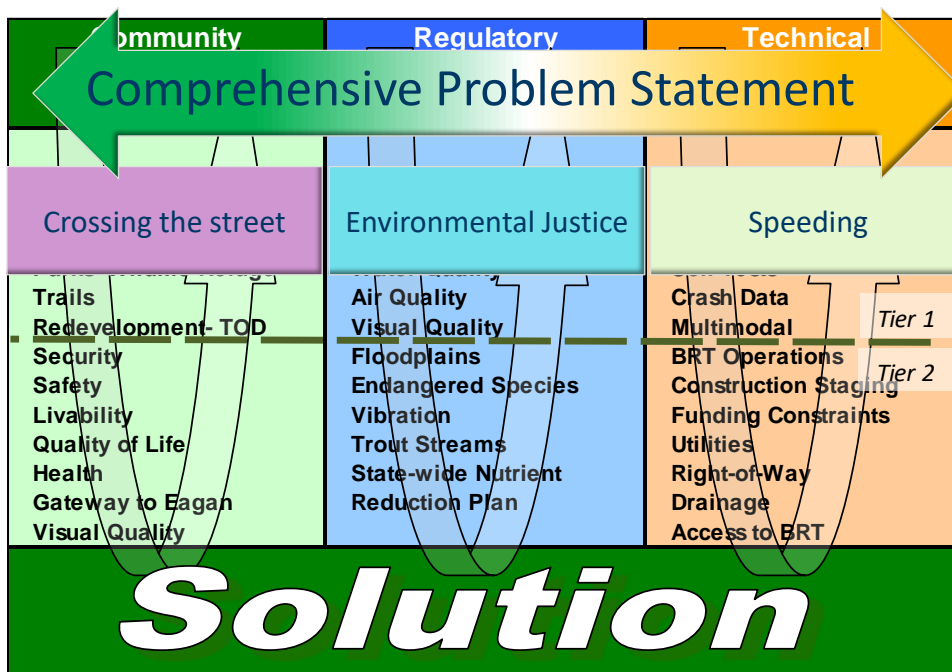
Workshop Agenda





Mobility vs. Speed

- Speed: Measurement of how fast you are moving
- Mobility: Measuring if you are moving
 - Travel: Moving from point A to point B, (such as a trip to work)
 - Circulating: Moving around a community (stopping for gas, banking and groceries)
 - Access: Moving into a destination (You park, get off the bus or park your bicycle and walk into your destination)





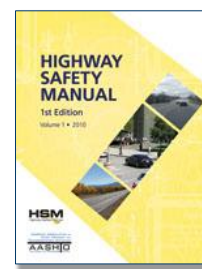
Safety Performance Viewpoints

Objective Safety refers to the number and severity of crashes occurring on a particular facility in a particular time period

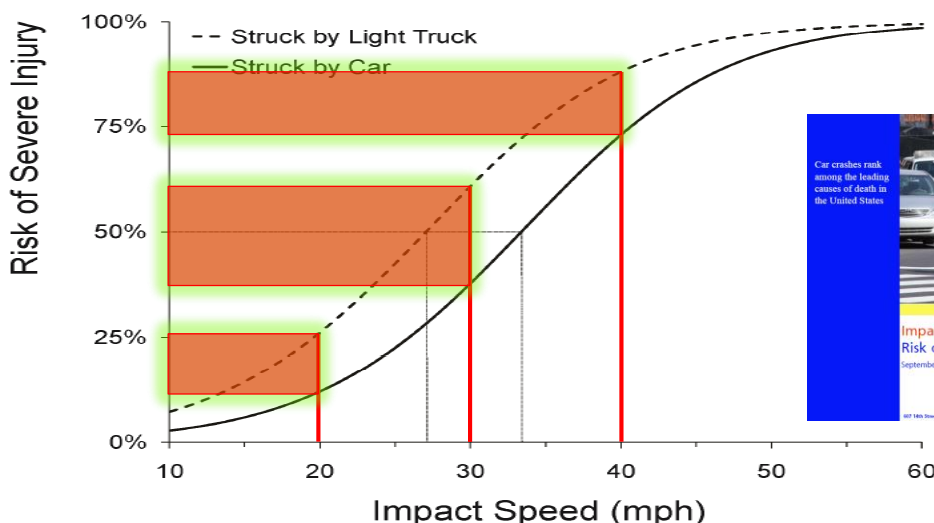
Nominal Safety refers to compliance with standards, warrants, guidelines and sanctioned design procedures

Subjective Safety refers to the users perception of how safe a facility feels

Substantive Safety is the expected crash frequency and severity for a roadway



Subjective Safety: Safe Speeds





Complete Streets Design Charrette

