



# **Traffic Crashes in Southeast Minnesota**

## **Toward Zero Deaths Workshop**

**Cheri Marti, Director  
Office of Traffic Safety, Department of Public Safety**

**May 21, 2009**



# Traffic Crashes in Southeast Minnesota

What Do We  
Know?

# Let's Look at the Crash Data!





# Identifying the Problem

- n **Who** is being severely injured or killed?
- n **When** do the crashes happen?
- n **Which** driving behaviors are contributing to crashes?
- n **What** types of crashes are occurring?
- n **Where** are the crashes taking place?
- n **What** is the economic impact?
- n **How** can we prevent these tragedies?



# TZD Key Principles

Use the data as your  
foundation to guide  
initiatives

Avoid predetermined  
solutions in search of a  
problem

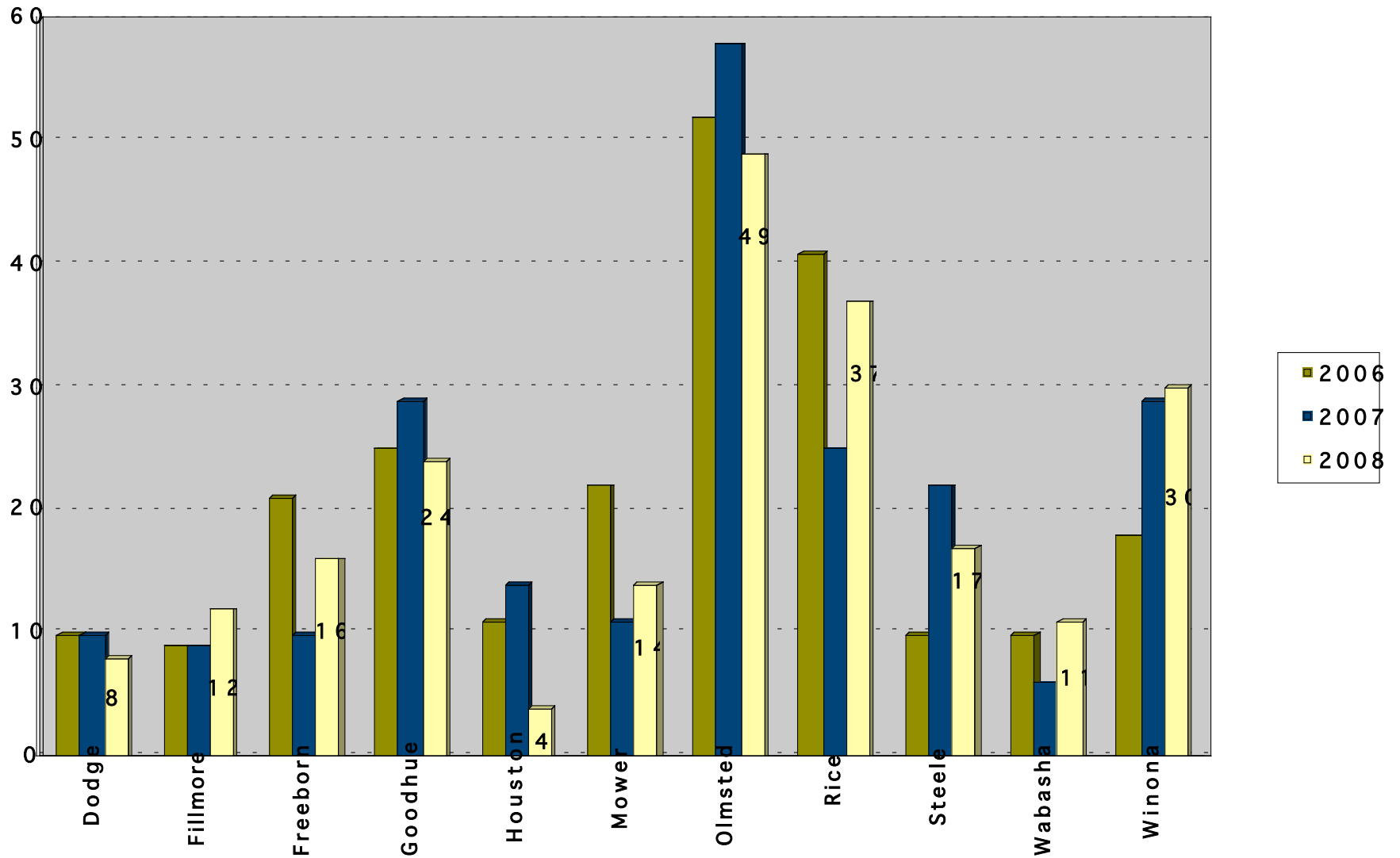


## Crash Data Summary Southeast MN 2004 - 2008

Year	Total Crashes	Injury Crashes	PDO Crashes	Severe Injuries	Fatals
2004	8,863	2,657	6,140	285	70
2005	8,294	2,367	5,873	246	63
2006	7,121	2,247	4,809	229	69
2007	7,066	2,140	4,878	223	53
2008*	7,547	2,250	5,233	222	68

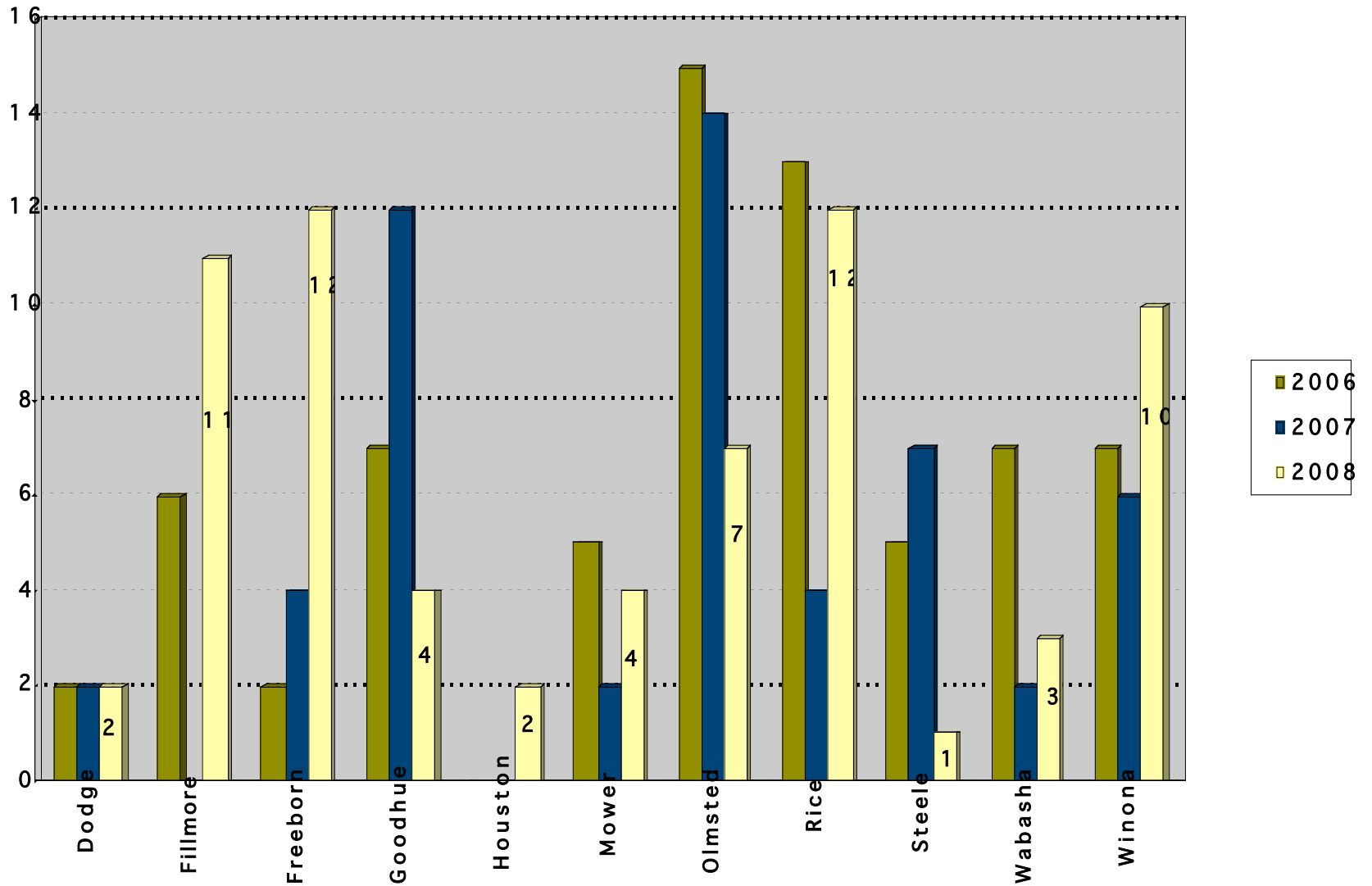
\*2008 data are preliminary

## Severe Injuries by County Southeast MN 2006 - 2008



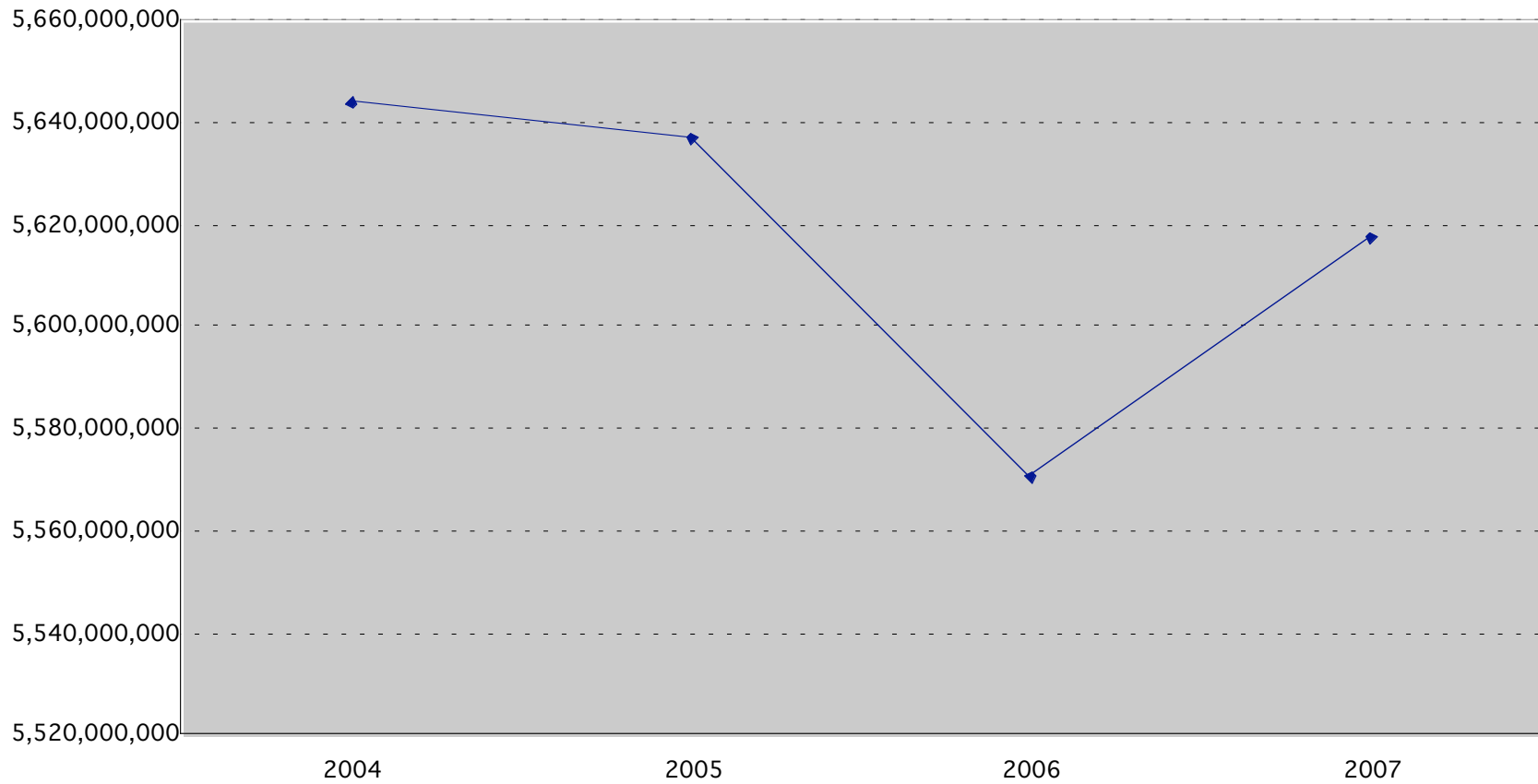


## Fatalities by County Southeast MN 2006 - 2008

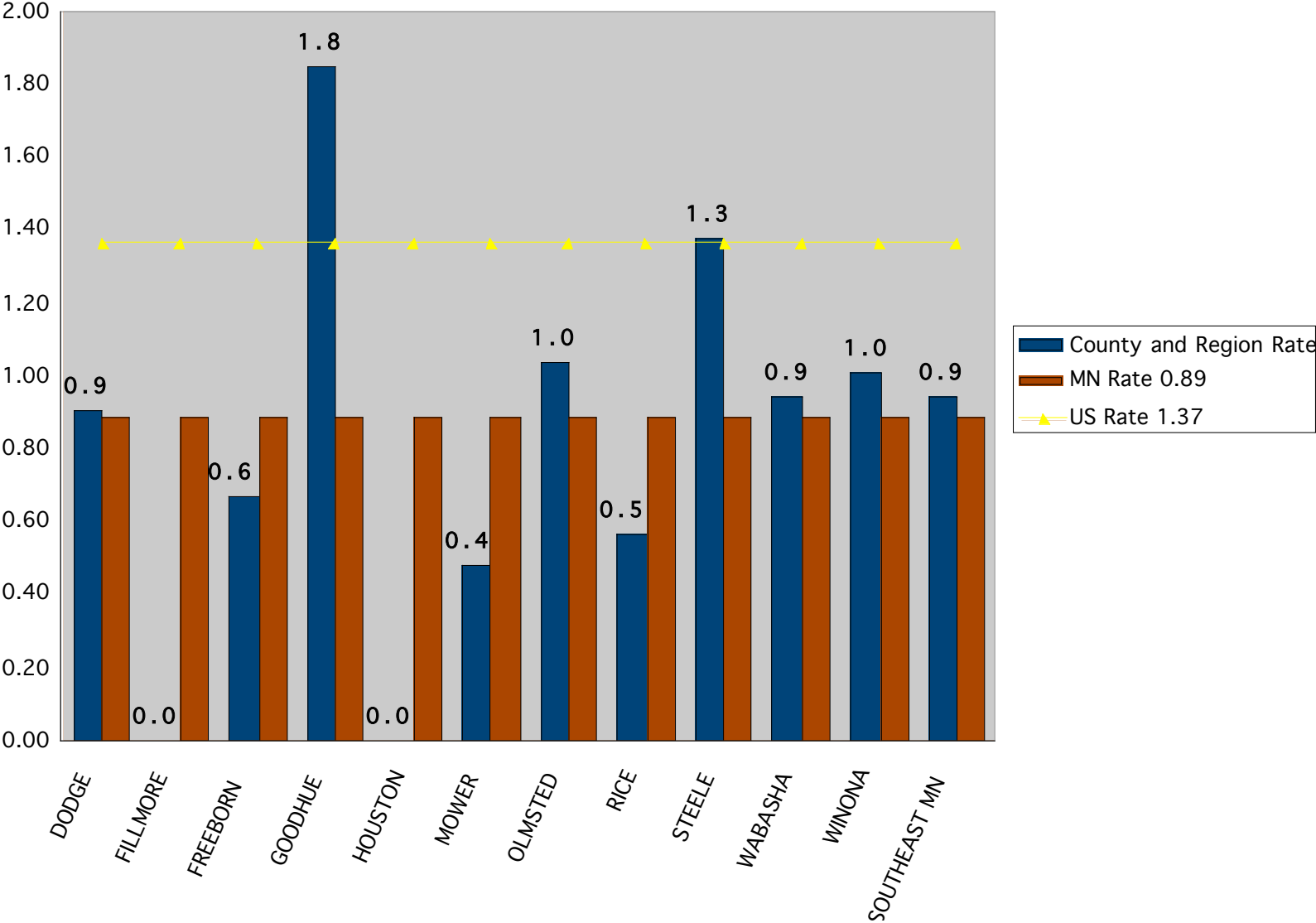




## Vehicle Miles Traveled Southeast MN 2004 - 2007



# Fatality Rates per 100M Vehicle Miles Traveled County, Southeast MN, State, and National 2007

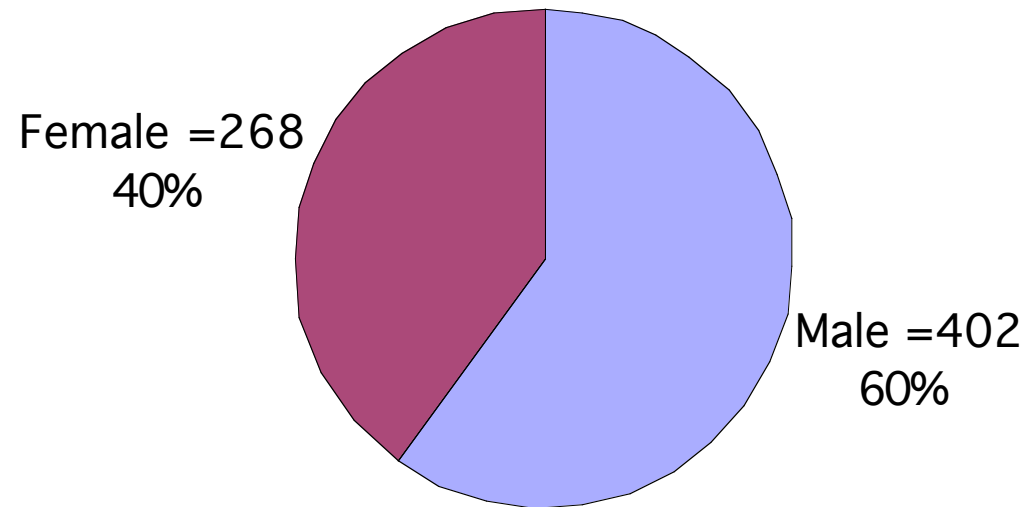


# Who is being severely injured or killed?



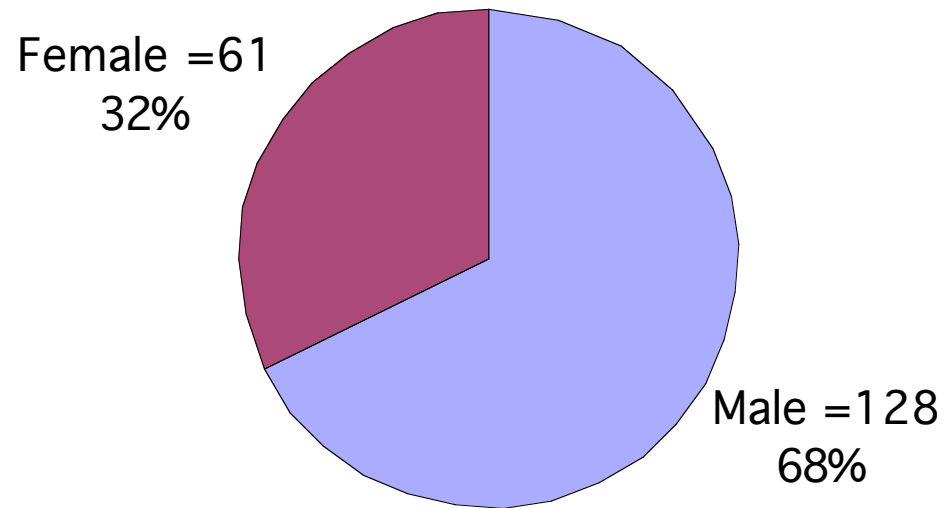


## Severe Injuries by Gender Southeast MN 2006 - 2008

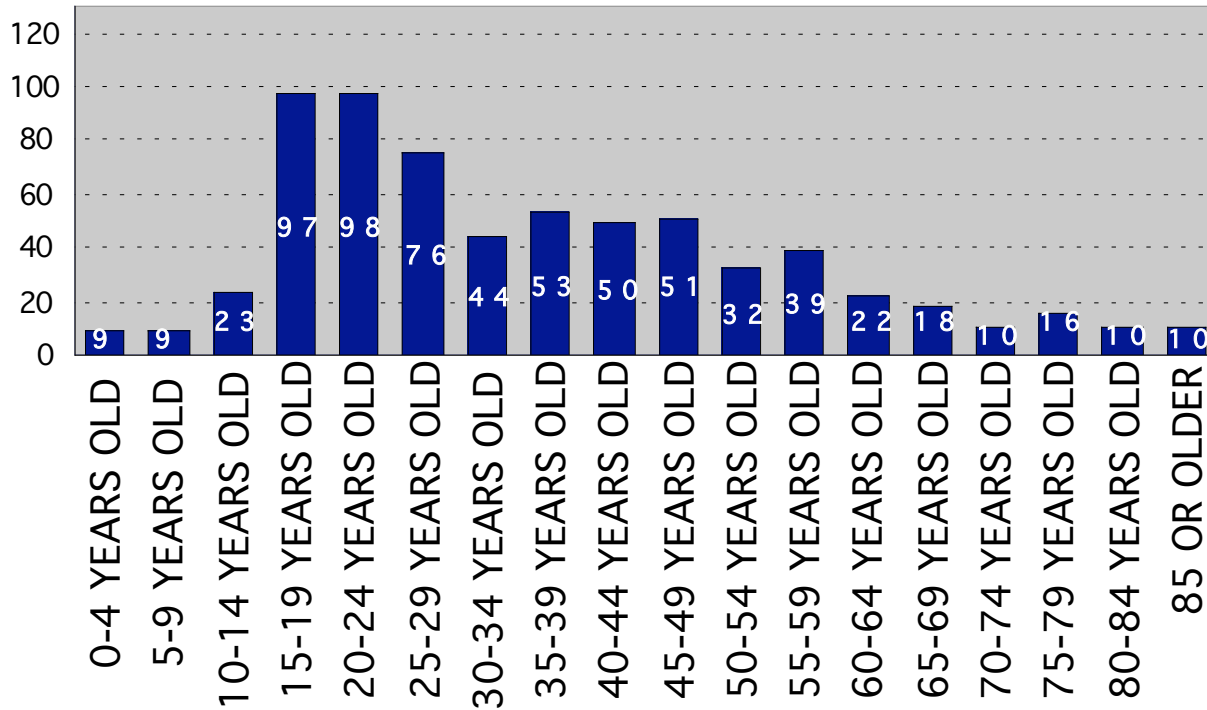




## Fatalities by Gender Southeast MN 2006 - 2008

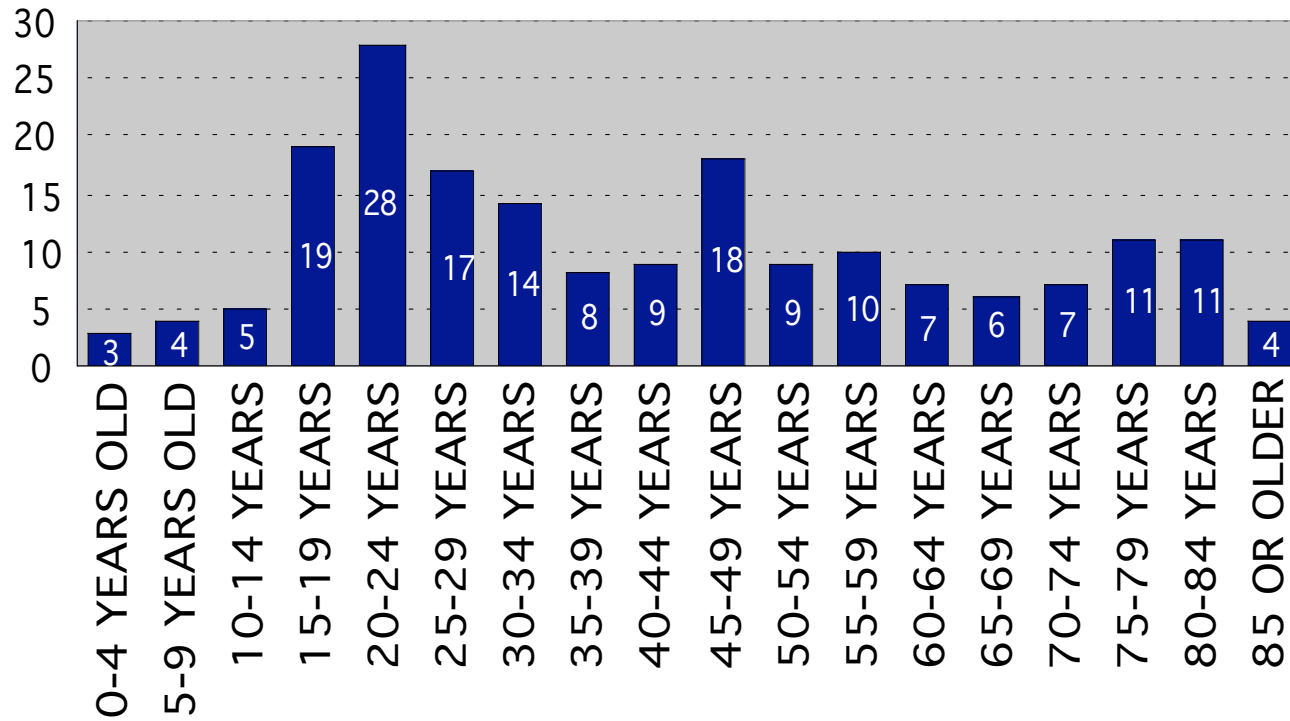


## Severely Injured by Age Southeast MN 2006 - 2008



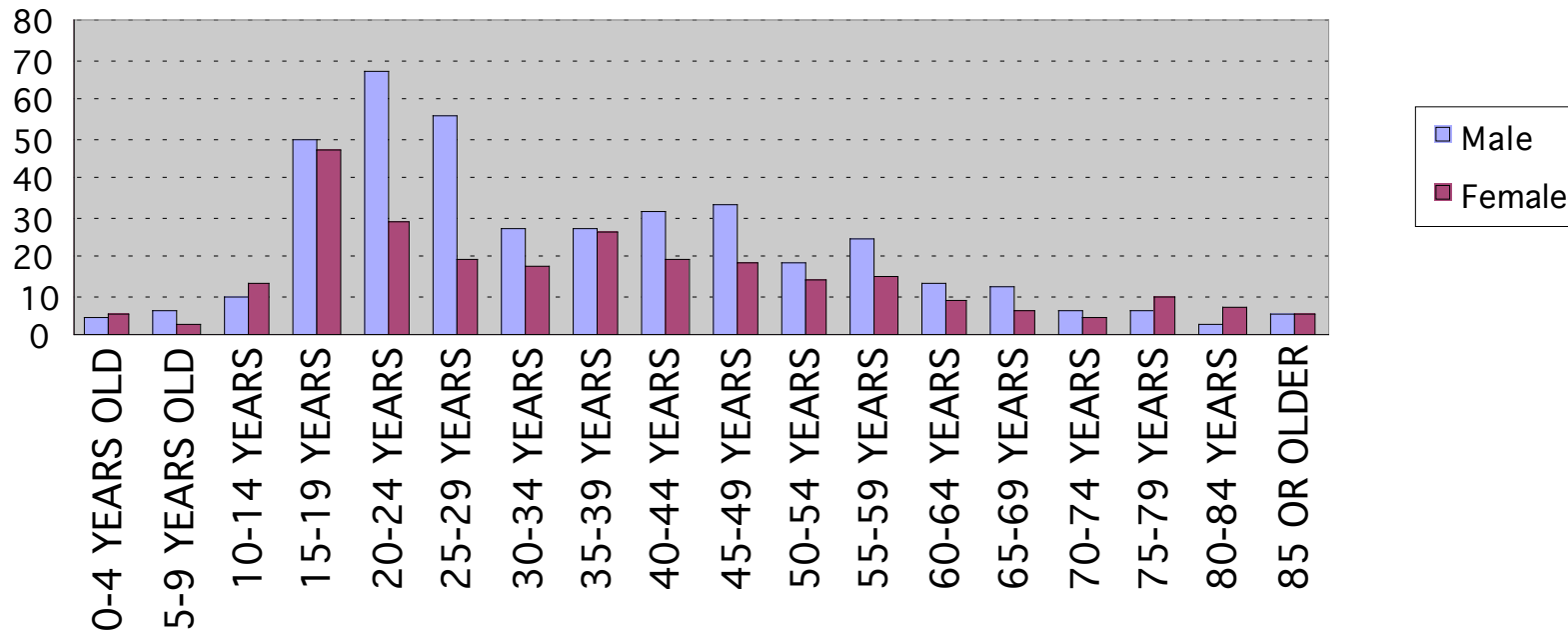


## Fatalities by Age Southeast MN 2006 - 2008

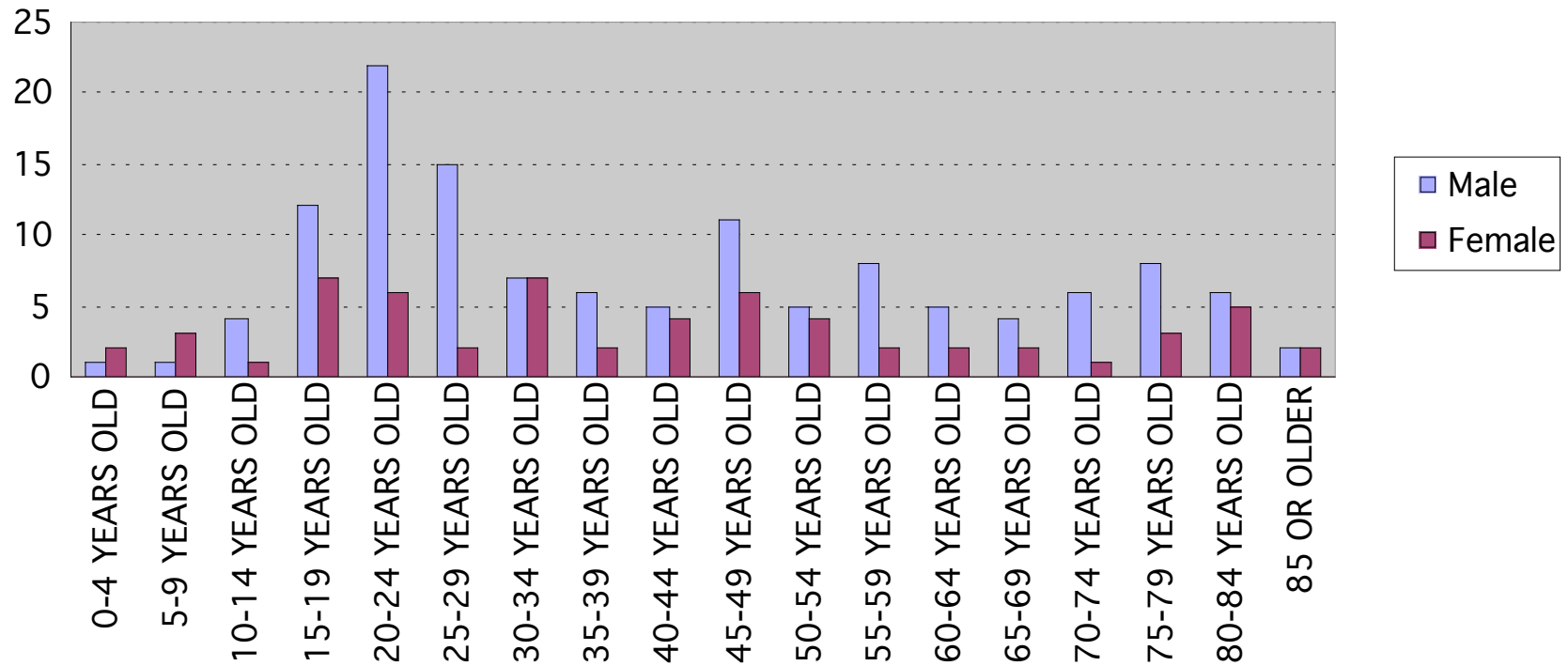




## Severely Injured by Age and Gender Southeast MN 2006 - 2008



## Fatalities by Age and Gender Southeast MN 2006 - 2008



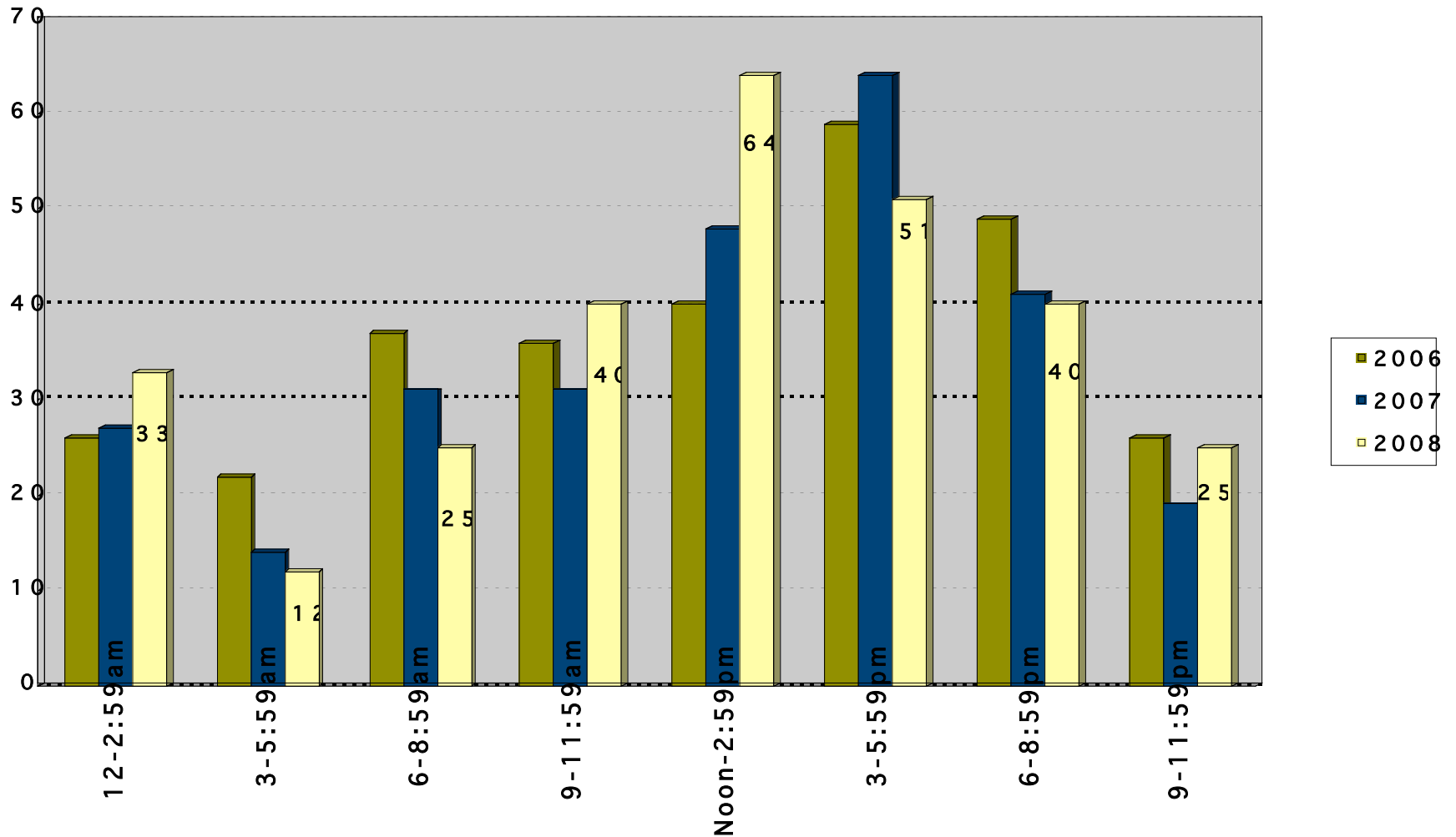
# When do the crashes happen?

-Time of day

-Month

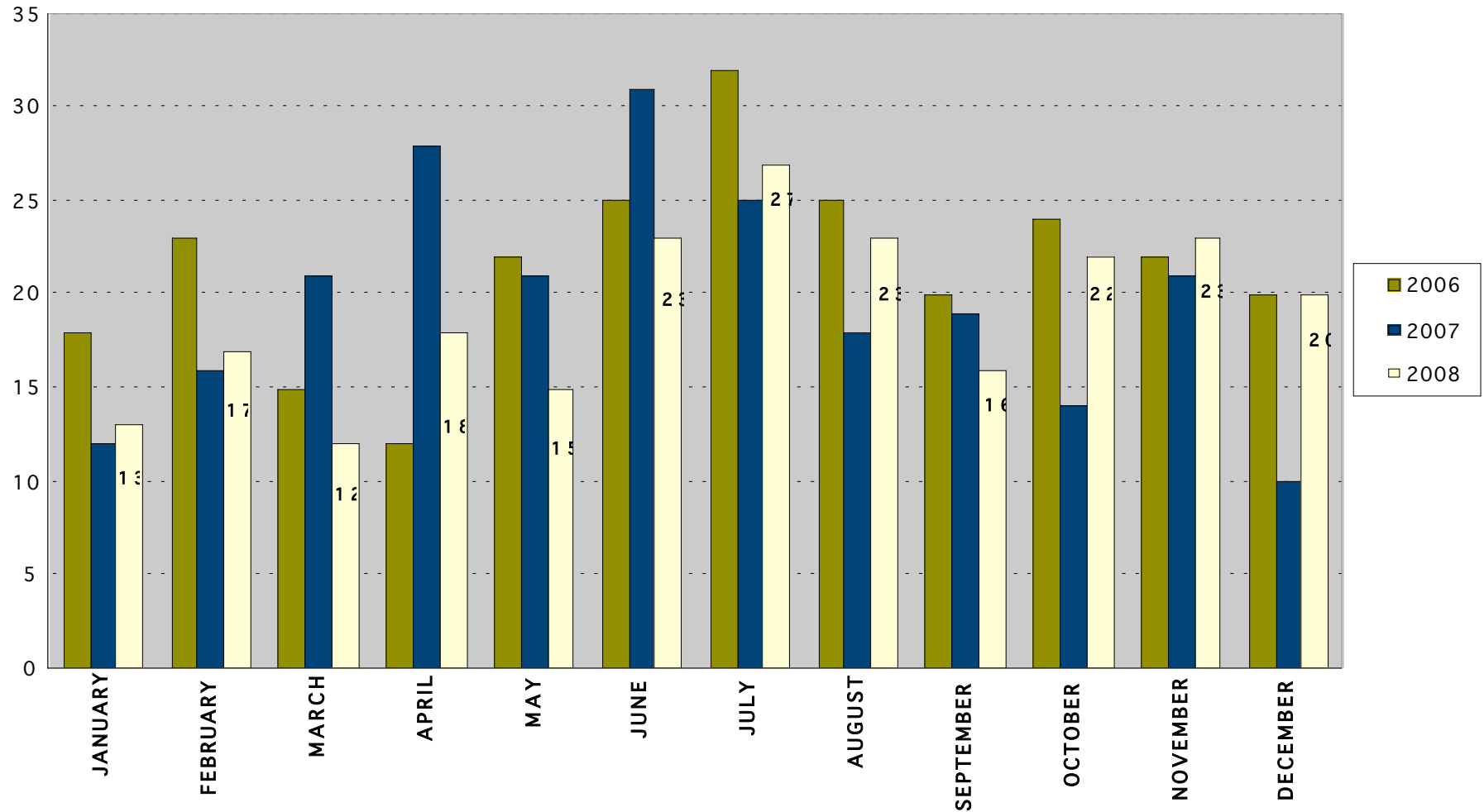


## Fatal and Severe Injuries by Time of Day Southeast MN 2006 - 2008





## Fatalities and Severe Injuries by Month Southeast MN 2006 - 2008



# Which driver behaviors are contributing to crashes?





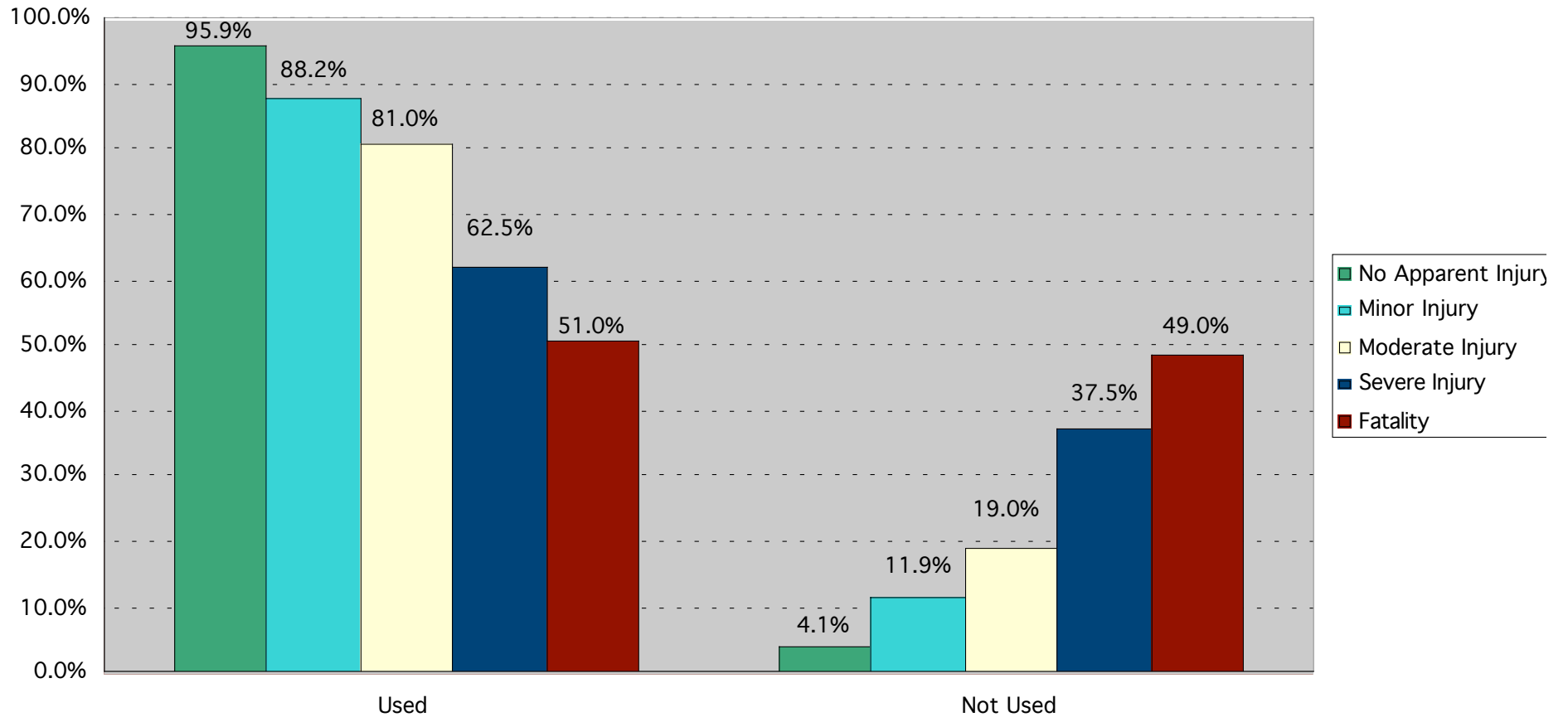
**All Single Vehicle Crashes  
Top Five Contributing Factors by Age Group  
Southeast MN 2008**

CONTRIBUTING FACTOR	AGE					
	15-19	20-24	25-29	30-34	35-64	65-79
ILLEGAL/UNSAFE SPEED	26.6	29.6	37.4	35.7	28.9	16.9
OVERCORRECTING	10.0	5.6	4.3	4.7	6.0	5.4
DRIVER INATTENTION/DISTRACTION	13.9	13.5	10.4	8.4	11.7	19.6
DRIVER INEXPERIENCE	12.5	5.3	1.4	3.0	1.7	1.4
CHEMICAL IMPAIRMENT (officer perception only)	3.5	8.7	6.2	4.4	5.2	0.7

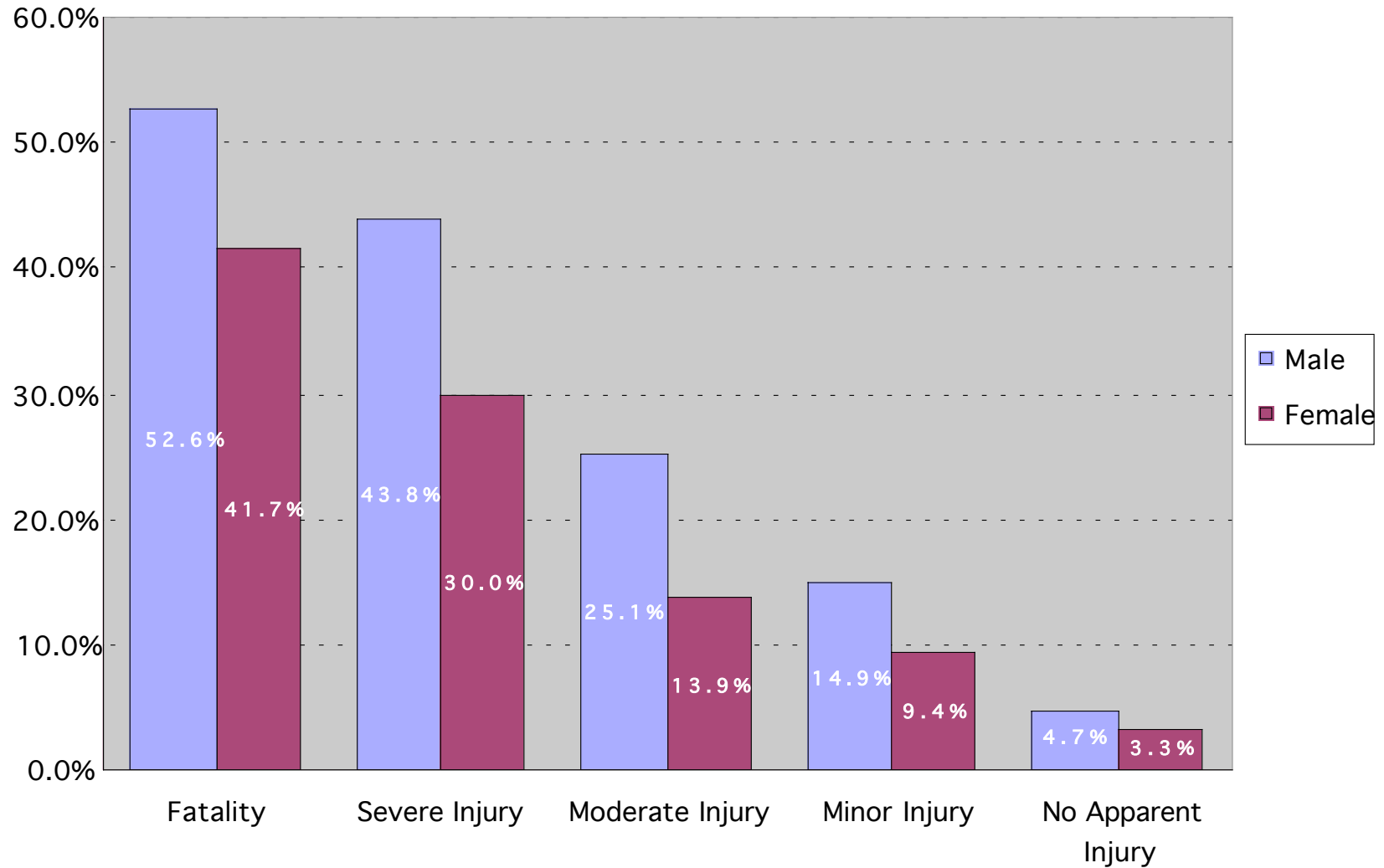
## All Multiple Vehicle Crashes Contributing Factors by Age Group Southeast MN 2008

CONTRIBUTING FACTOR	AGE						
	15-19	20-24	25- 29	30- 34	35- 39	65- 69	80+
FAILURE TO YIELD RIGHT OF WAY	19.9	15.4	20.9	20.4	19.4	31.9	33.2
ILLEGAL/UNSAFE SPEED	9.9	15.6	12.4	10.3	10.4	5.9	4.0
FOLLOWING TOO CLOSELY	5.1	6.2	4.9	5.1	6.0	4.3	3.2
DISREGARD OF TRAFFIC CONTROL DEVICE	3.5	3.2	3.7	4.0	3.9	5.6	4.9
DRIVER INATTENTION/DISTRACTIO	20.7	21.0	18.9	19.2	20.0	16.7	18.2
CHEMICAL IMPAIRMENT (officer perception only)	0.7	3.5	2.1	3.5	1.8	0.2	0.0

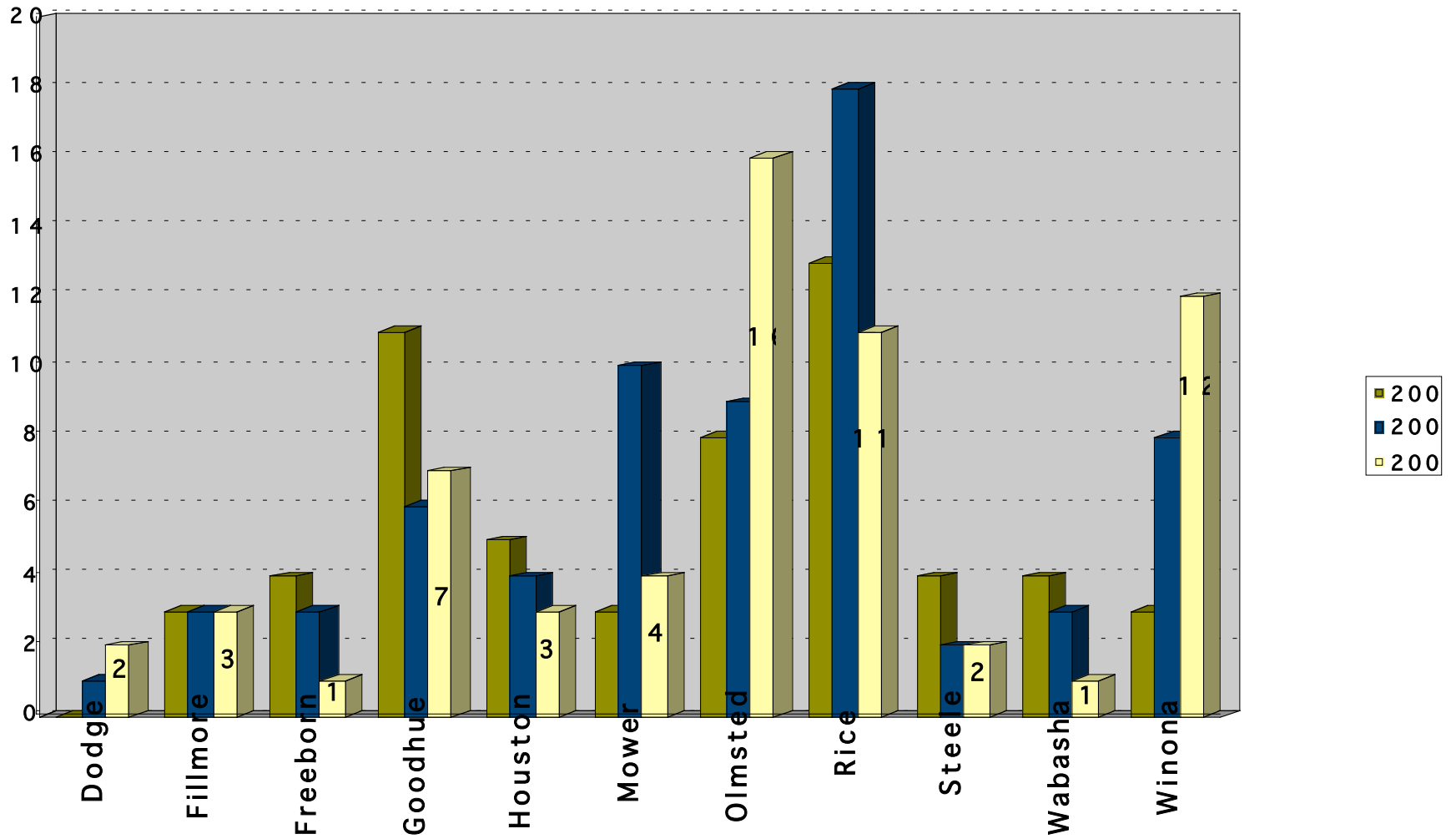
## Impact of Seat Belt Use on Injury Level Southeast 2006-2008



## Injury Level by Gender (proportion not wearing belts) Southeast 2006-2008

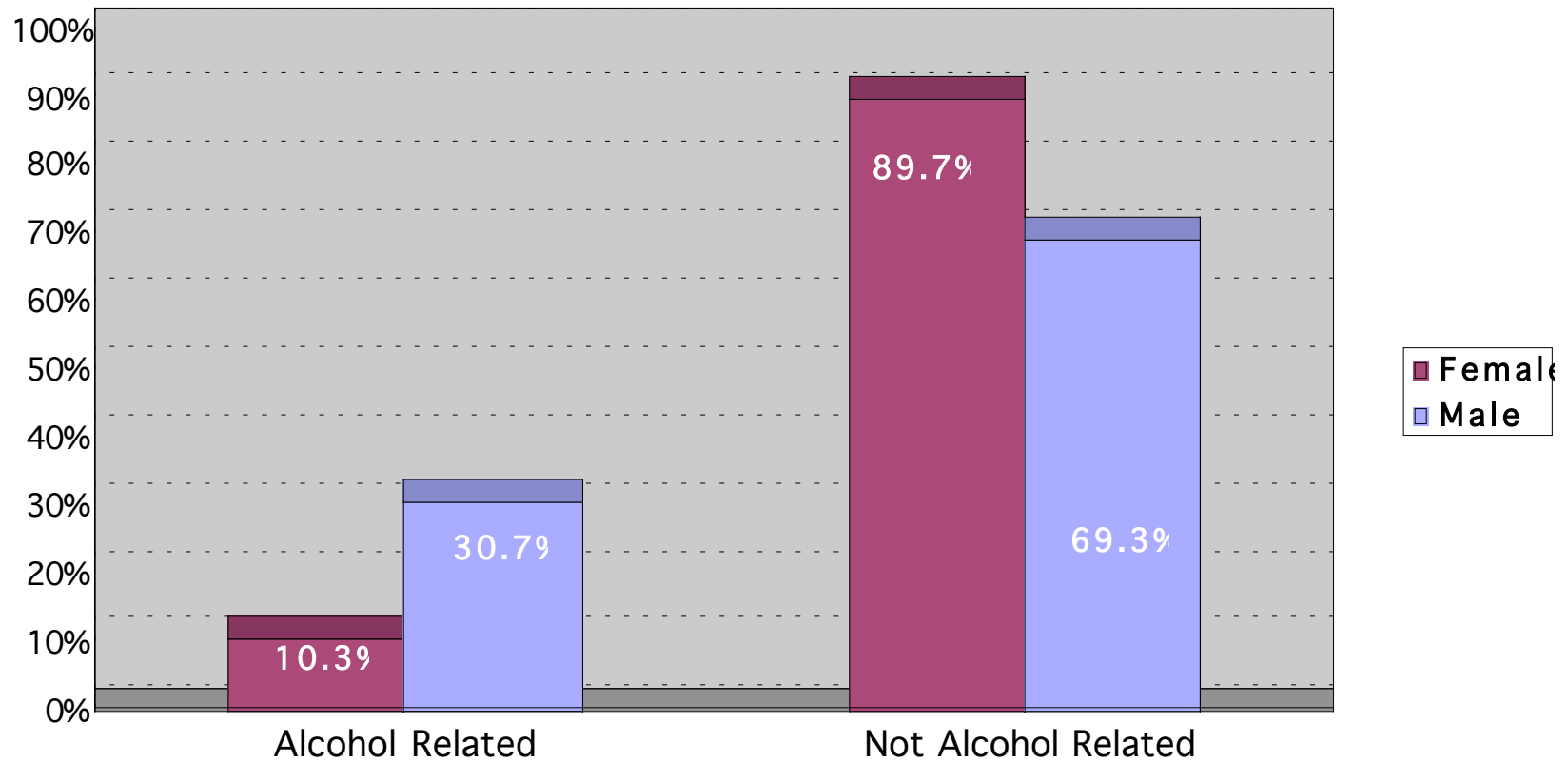


## Alcohol-Related Fatalities and Severe Injuries Southeast 2005-2007





## Alcohol Related Fatalities by Gender Southeast 2005 - 2007



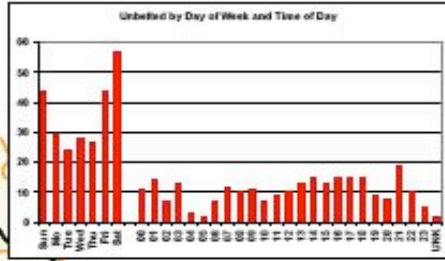
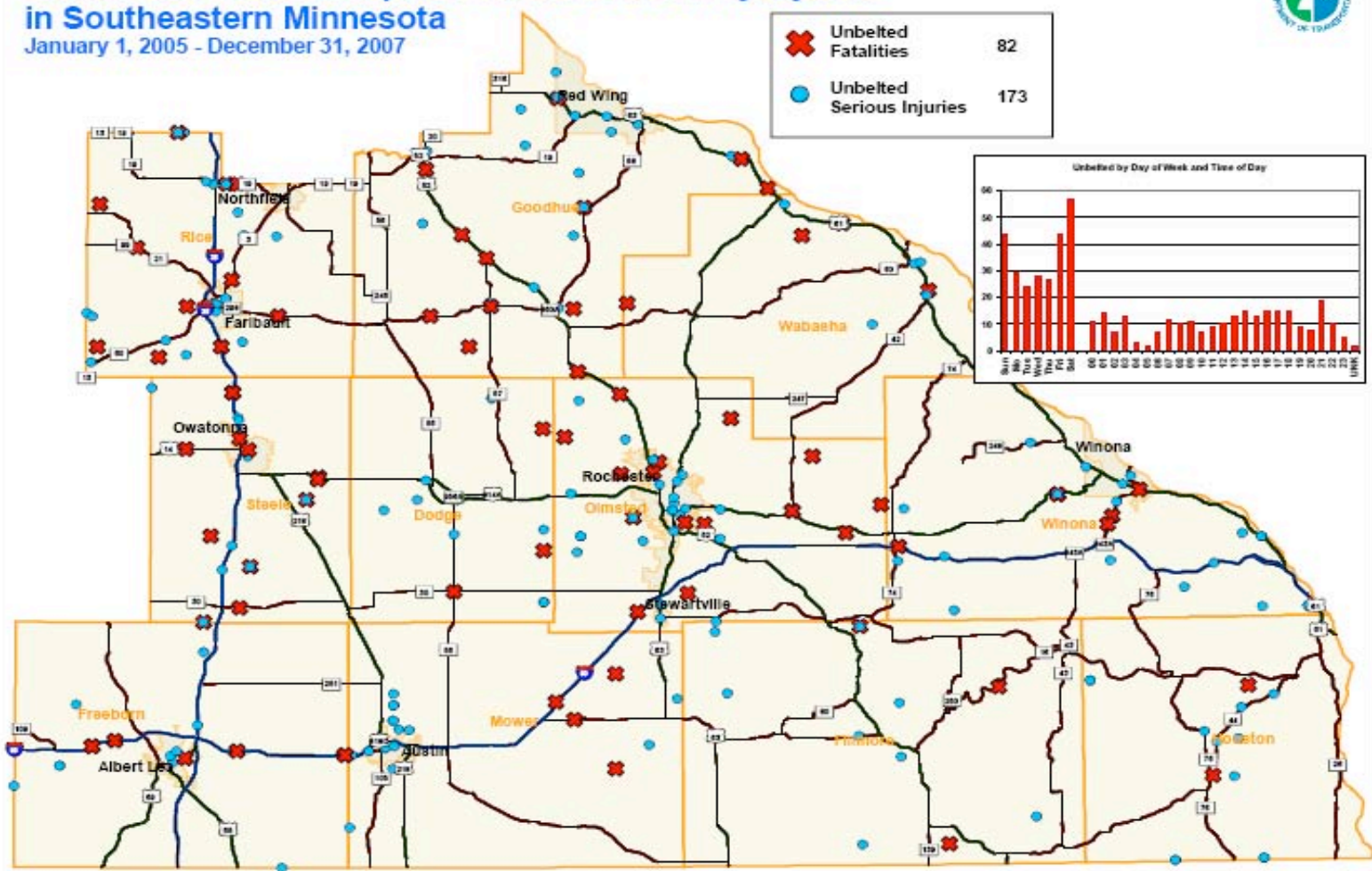
# Where Are They Occurring Southeast MN 2005 - 2007

## Unbelted Vehicle Occupants Killed or Severely Injured in Southeastern Minnesota

January 1, 2005 - December 31, 2007



	Unbelted Fatalities	82
	Unbelted Serious Injuries	173



Map provided by the Mn/DOT Office of Traffic, Safety, and Technology - December 2008

# SE Minnesota 2006 – 2008

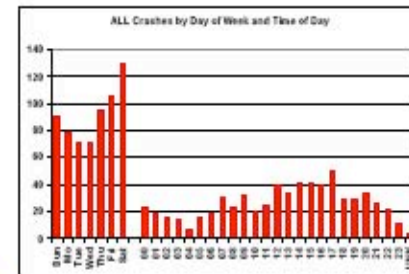
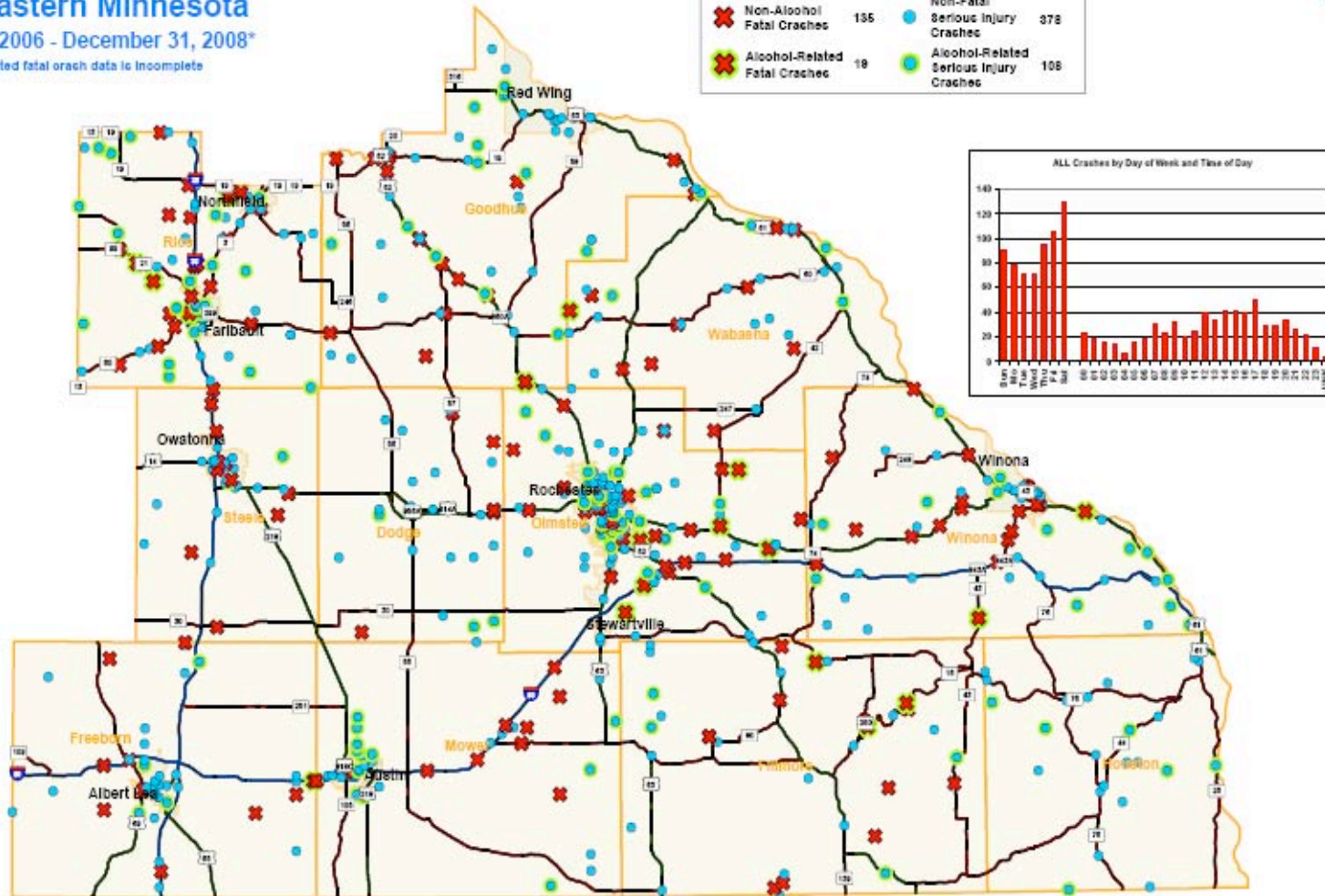
## Fatal and Serious Injury Crashes Southeastern Minnesota

January 1, 2006 - December 31, 2008\*

\*2008 alcohol-related fatal crash data is incomplete



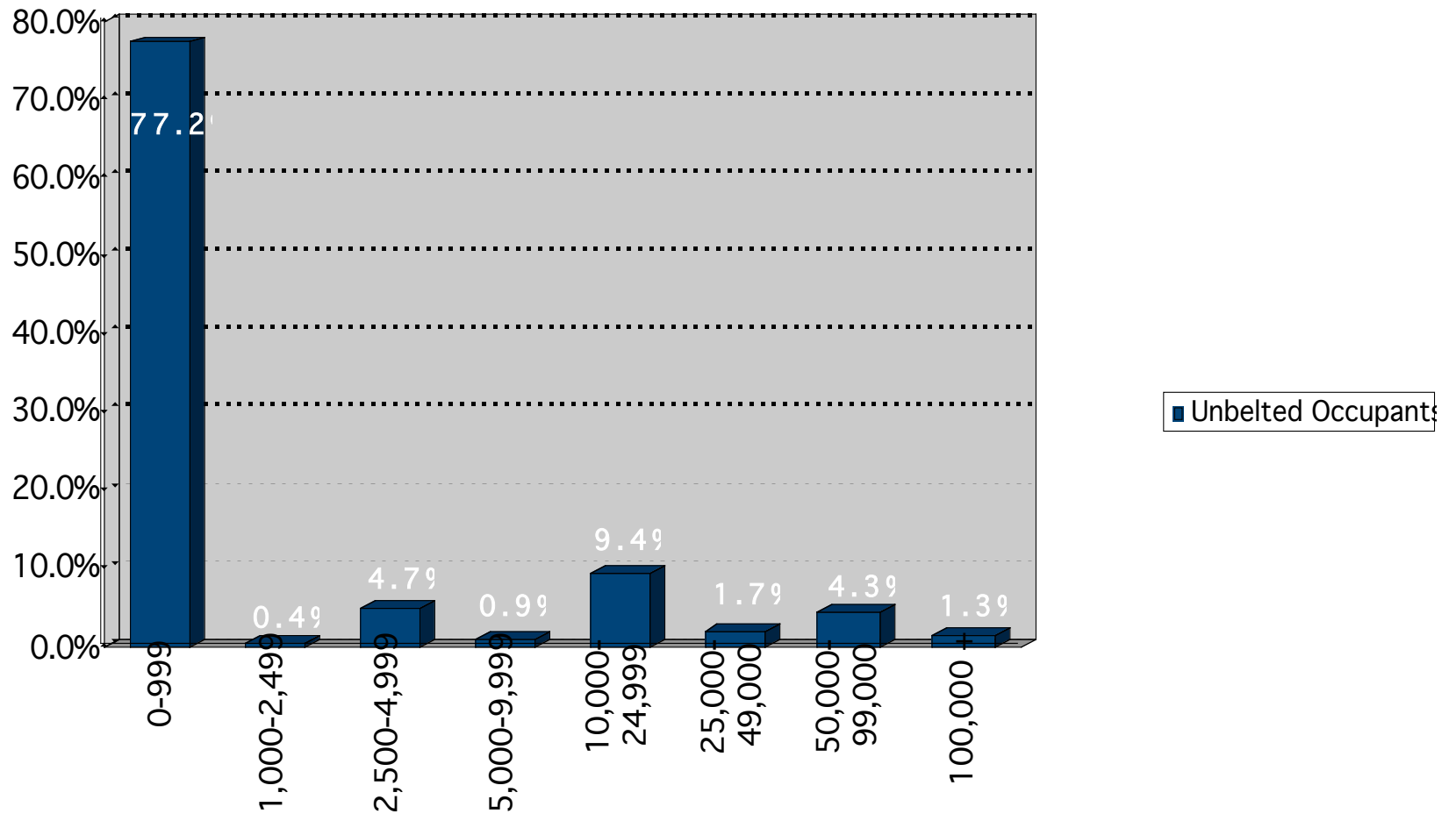
	Non-Alcohol Fatal Crashes	136		Non-Fatal Serious Injury Crashes	378
	Alcohol-Related Fatal Crashes	18		Alcohol-Related Serious Injury Crashes	108



Map provided by the Mn/DOT Office of Traffic, Safety, and Technology - May 2009



## Vehicle Occupant Fatalities and Severe Injuries by Population of City Southeast 2006 - 2008

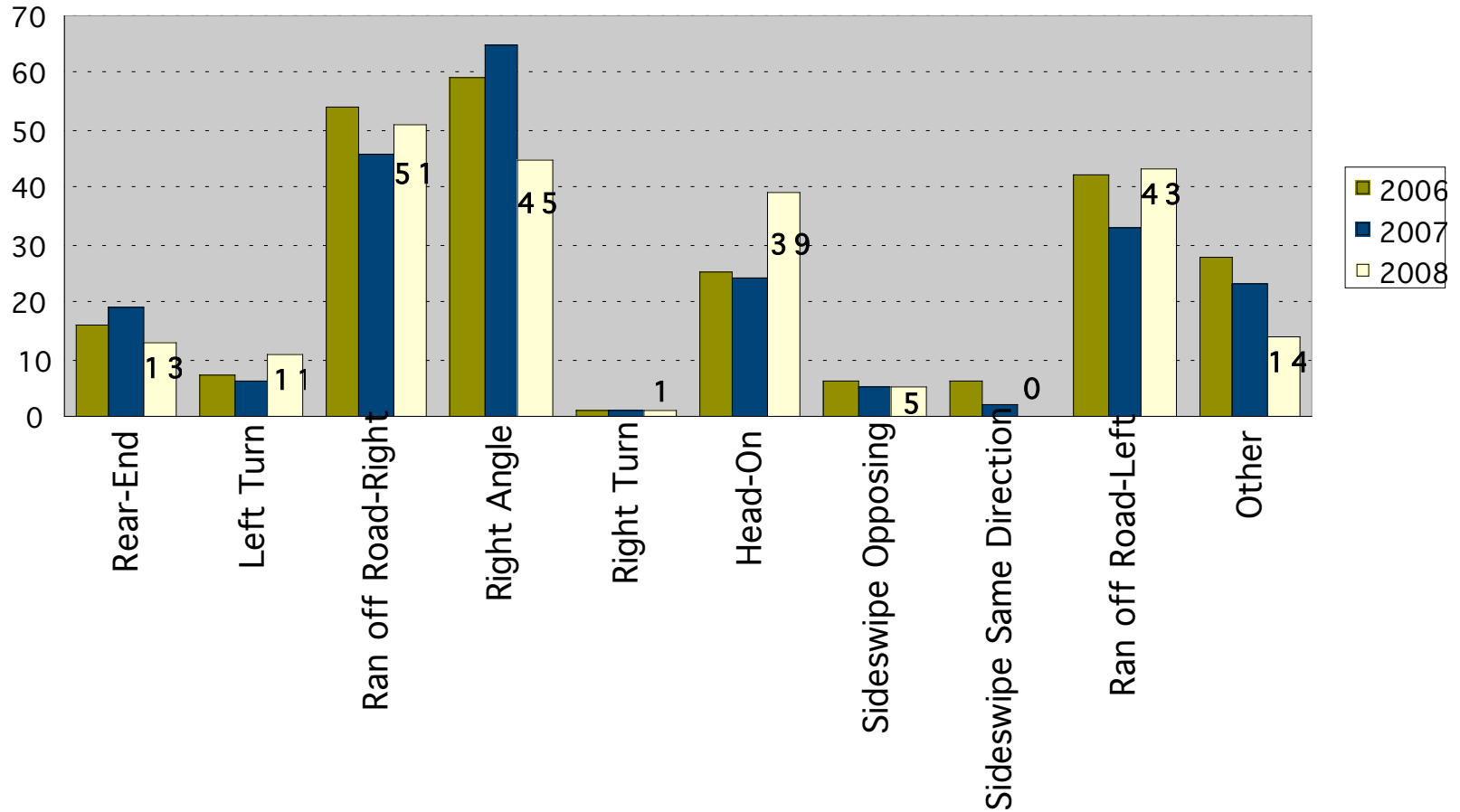


**What types of crashes are occurring?**

**What vehicles are getting into crashes?**

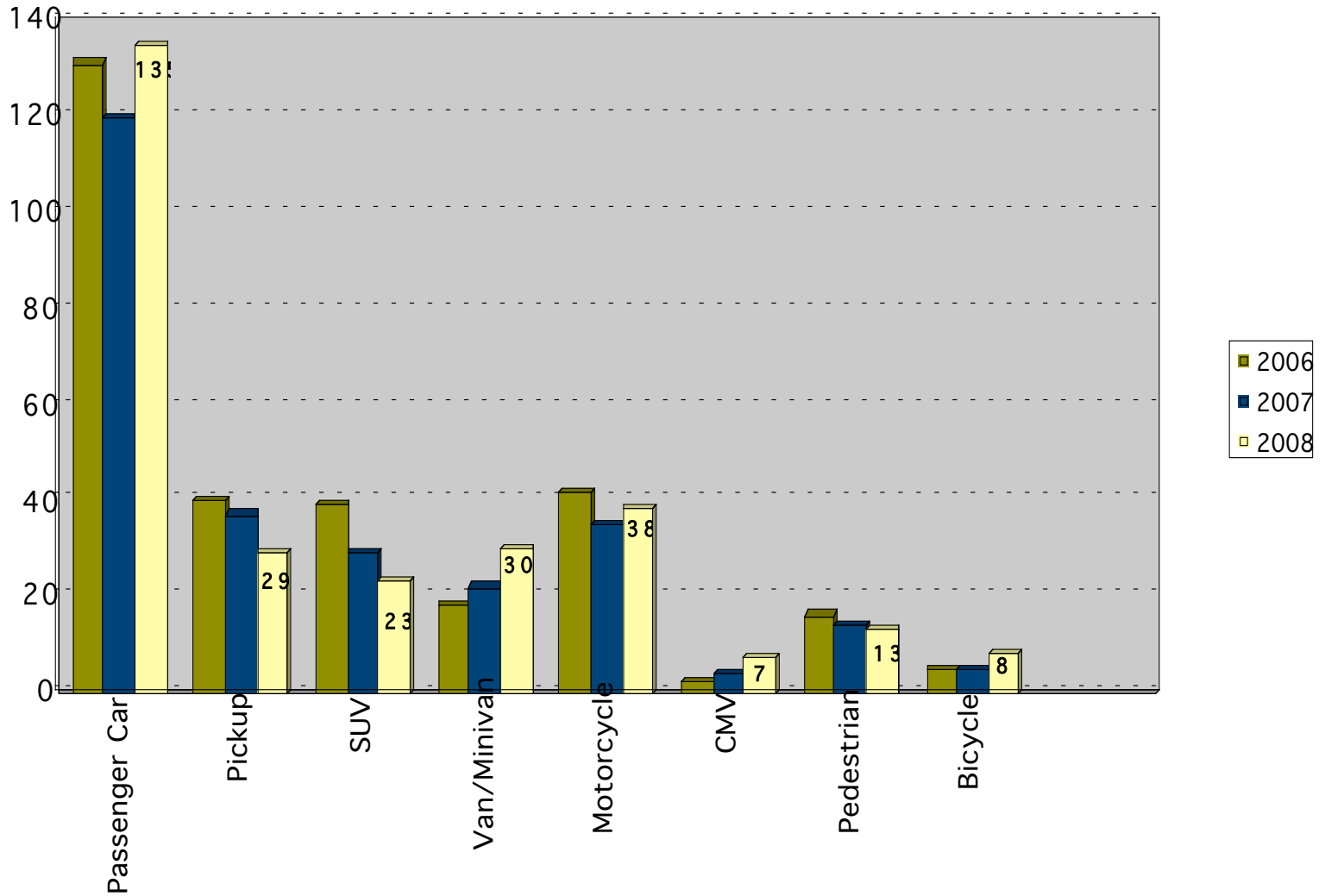


## Type of Crash, Fatal and Severe Crashes Southeast MN 2006 - 2008





## Persons Killed or Severely Injured by Type of Vehicle Occupied Southeast MN 2006 - 2008



# What is the economic impact?





## Economic Cost of the Unbelted Southeast MN 2006 - 2008

Severity	Unbelted	Economic Cost
Killed	70	\$81,800,000
Injured	1,185	\$25,844,400
Total	1,255	\$107,644,400

# How can we prevent these tragedies?





## SE TZD – Key Themes

- n Fatalities increased in Southeast (up 28% from 2007).
- n Males 1½ times more likely to be severely injured than females.
- n Males 2 times more likely to be killed in a crash than females.
- n Two out of five (39.1%) of the killed and severely injured were 15 – 29 years–old.
- n Deadliest time of day in SE 12:00pm – 3:00pm with severe and fatal crashes increasing the past 3 years during this time of day.
- n Speeding is a major factor in single vehicle crashes – particularly for 15 to 34–years–olds.
- n Male motor vehicle occupants are more likely to be unbelted than female motor vehicle occupants.
- n Male fatalities 3 times more likely to be alcohol related crash than female fatalities.
- n Three out of four (77.2%) fatalities and severe injuries happen in areas with less than 1,000 population.
- n Ran off road and head–on collisions increasing.
- n Unbelted fatalities and severe injuries cost the region over 100 million dollars 2006 – 2008.



# TZD Vision and Mission

***Vision*** – To reduce fatalities and serious injuries on Minnesota's roads to zero.

***Mission*** – To move the state of Minnesota Towards Zero Deaths on our roadways through the multidisciplinary application of education, engineering, enforcement, and emergency medical strategies driven by data, best practices, and research.



Thank you.

Office of Traffic Safety

[www.dps@state.mn.us/ots](http://www.dps@state.mn.us/ots)

