

# SW TZD Regional Workshop



Your Destination...Our Priority



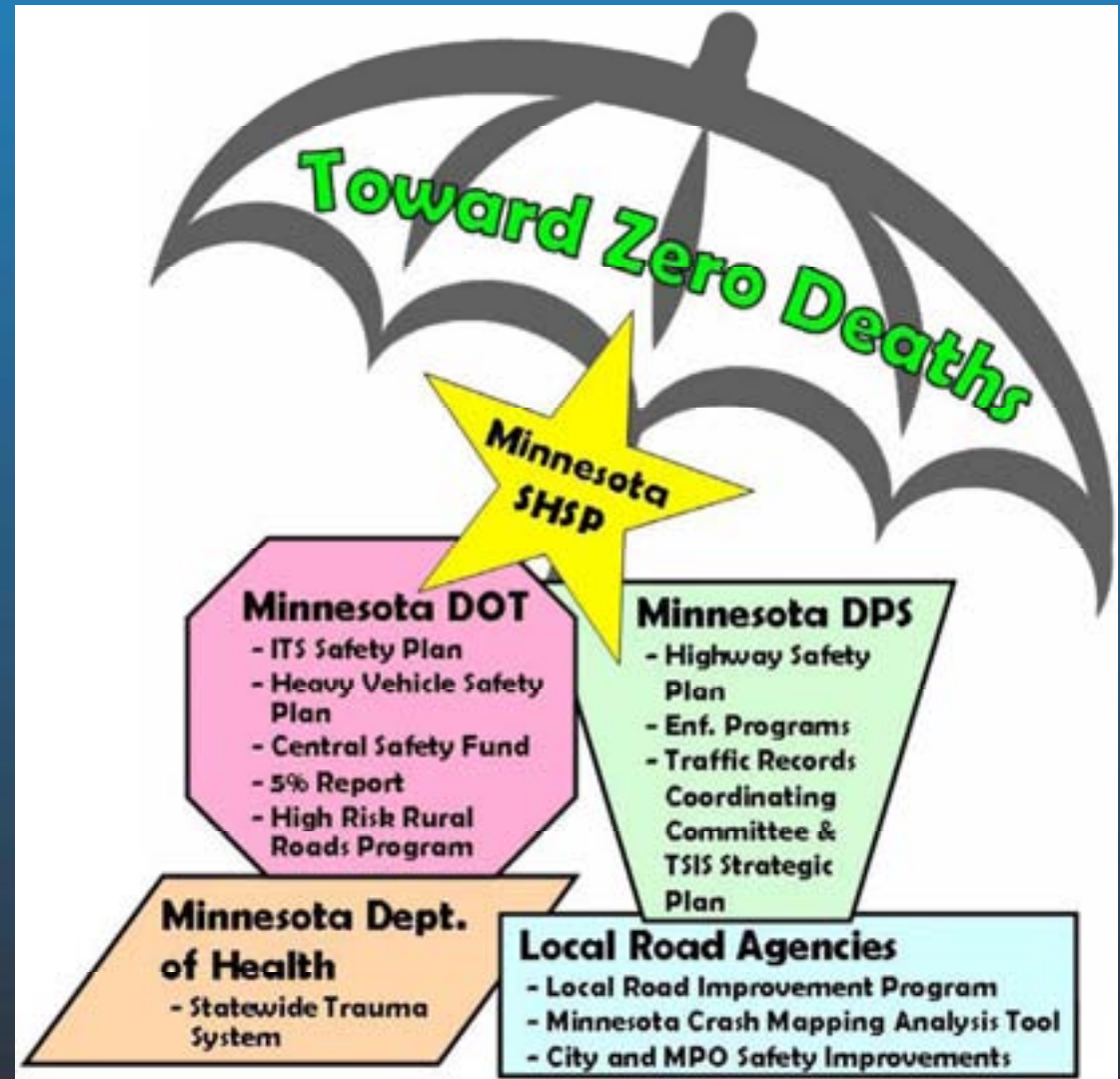
# Keys to TZD Success

- Common vision
- Organizational motivation and mobilization
- Collaborative Partnerships
- Data-driven analysis
- Strategy Identification and Implementation
- Evaluation



# Safety Planning Coordination

- ❑ Towards Zero Death established to coordinate safety efforts



# Emphasis Areas from SHSP

Total Fatalities	3,008		
Total Vehicle Occupant Fatalities	2,429		
<b>Driver Behavior</b>			
Unbelted (Based on Veh. Occ. Fatalities)	1,271	(52%)	1
Alcohol-Related	1,068	(36%)	2
Speeding-Related	850	(28%)	5
Involved Drivers Under 21	718	(24%)	6
<b>Infrastructure Based</b>			
Single Vehicle ROR	965	(32%)	4
Intersection	1,004	(33%)	3
Head-On and Sideswipe	611	(20%)	7

Fatality Rank



Data-Driven Strategies  
SHSP Critical Emphasis Areas

1. Increase Seat Belt Use & Reduce Impaired Driving
2. Improve the Design and Operation of Intersections
3. Lane Departure
  - Reduce Head-On and Across-Median Crashes
  - Keep Vehicles on the Roadway
  - Minimize Consequences of Leaving Roadway
4. Young Drivers & Curb Aggressive Driving
5. Increase Driver Safety Awareness & Improve Information and Decision Support Systems



## Strategy

# Speed Management Project - 2005

- Raised speed limits on 905 miles of 2-lane, 2-way roads from 55 to 60 mph
- Increased enforcement
- Public education campaign
- Results - % of vehicles going over 70 mph:
  - Metro area – **down 12%**
  - Greater Minnesota – **down 30%**
- Culture change – DOT funds to State Patrol - \$1.5 m/yr



# Cable Median Barrier

- Installation cost approximately \$125K per mile
- Cost to maintain barrier \$6K per mile in Metro
- Recover 65% of maintenance costs through restitution
- Initial Evaluation – Saving over 2 lives per year on first installation (Maple Grove)



	Miles Currently Installed	Miles Funded 2009-2011	Miles Planned unfunded	Total planned
Metro Area	55.4	51.2	56.9	163.5
Greater MN	84.0	45.4	22.1	151.5
Total	139.4	96.6	79.0	315.0



County Partnerships  
**2007 County SHSP  
Projects Funded**

63 applications from 46 of 87 MN counties  
Funded 40 projects, 34 counties

Strategy Category	Awarded
Lane Departures Strategies	\$1,140,000
Intersection Lighting	\$595,500
Enhanced Signing	\$212,000
Guardrail upgrades	\$1,130,400
Geometric Improvements	\$526,500
Road Safety Audits	\$550,000
<b>Total</b>	<b>\$4,154,400</b>



# Minnesota Fatalities

