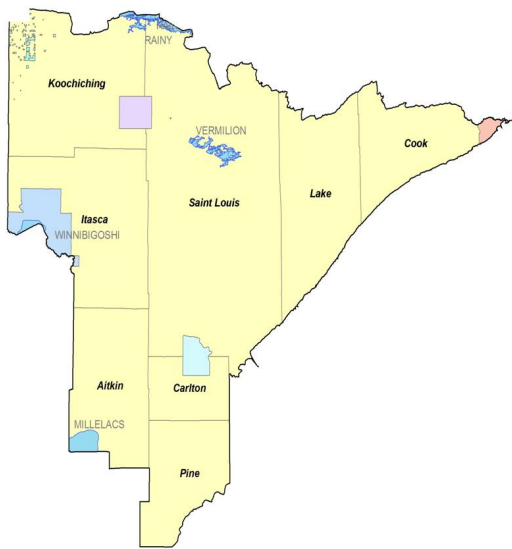


Mission:

To create a culture for which traffic fatalities and serious injuries are no longer acceptable through the integrated application of education, engineering, enforcement and emergency medical and trauma services. These efforts will be driven by data, best practices and research.

Values:

- ❖ Continuous improvements,
- ❖ Engage partners and
- ❖ Evidence-based approaches.



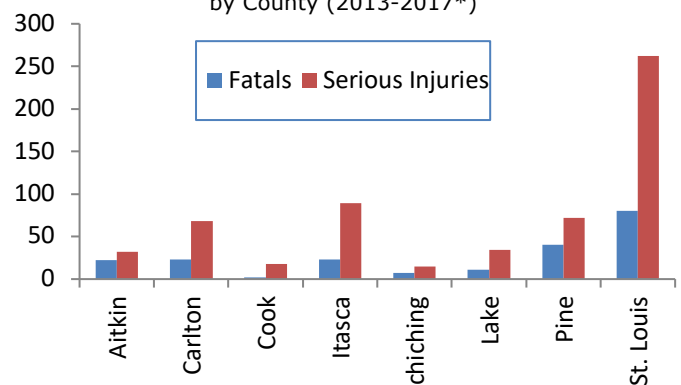
The Northeastern Minnesota Toward Zero Deaths (TZD) program began in 2010. The counties involved include: Aitkin, Carlton, Cook, Itasca, Koochiching, Lake, Pine and St. Louis.

The leading cause of deaths and severe injuries in Northeastern Minnesota include:

- ❖ **Alcohol,**
- ❖ **Distraction,**
- ❖ **Speed and**
- ❖ **Lack of Seatbelt use.**

Northeastern Minnesota Fatafs and Serious Injuries

by County (2013-2017*)



The leading type of crash resulting in deaths and severe injuries include:

- ❖ **Run-off-Road**
- ❖ **Intersection-related**

The Northeastern Minnesota TZD program is led by a steering committee comprised of the "4 Es:"

- ❖ **Enforcement**
- ❖ **Engineering**
- ❖ **Education**
- ❖ **Emergency Medical and Trauma Services**

Northeast Minnesota TZD Leadership Contacts

Engineering

Duane Hill, PE
MnDOT District Engineer
218-725-2704
duane.hill@state.mn.us

Enforcement

Captain Chip Lemon
Minnesota State Patrol
218-302-6100
charles.lemon@state.mn.us

Enforcement

Captain Ron Silcox
Minnesota State Patrol
218-735-3721
ronald.silcox@state.mn.us

Education / EMS

Holly Kostrzewski, MPH
Northeast MN TZD Coordinator
218-725-2828
holly.kostrzewski@state.mn.us

www.minnesotatzd.org

*2017 data are preliminary