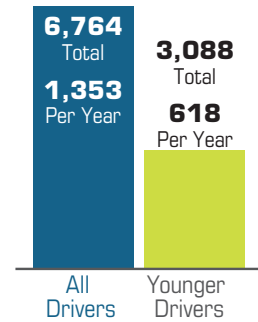


Overview Younger Drivers: Fatal and Severe Injury Crashes

On Minnesota's roadways, there were 3,088 severe crashes (fatal and serious injury) involving younger drivers ages 15-29 over a five year period from 2009-2013, averaging 618 severe crashes per year. The crash data provided in this fact sheet is for younger drivers ages 15-29, unless otherwise noted. If there was a significant difference in data for the two age groups of 15-20 and 21-29, the data is shown separately. **46% of crashes each year involve younger drivers.**

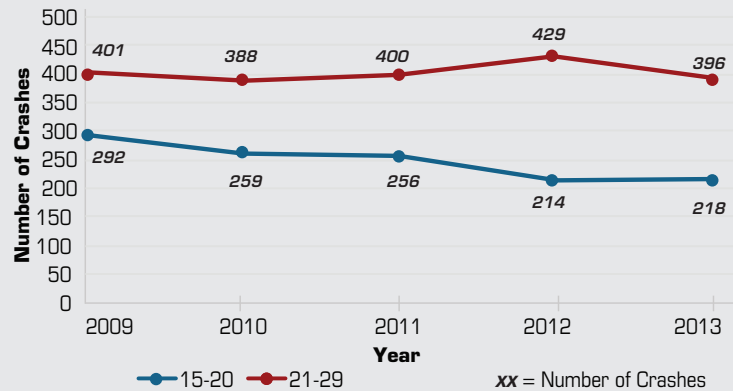
Severe Crashes Summary (2009-2013)



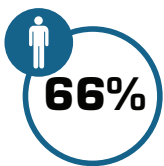
Source: Minnesota severe crash (K+A) data from 2009-2013, MN DPS

Crashes by Year

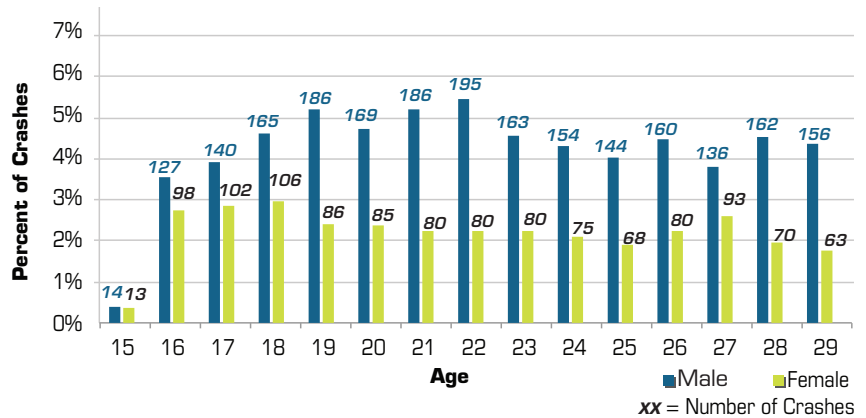
Younger driver severe crashes for ages **21-29 have remained consistent** over the past five years, while crashes for ages **15-20 have decreased.**



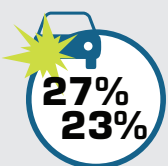
Crashes by Age and Gender



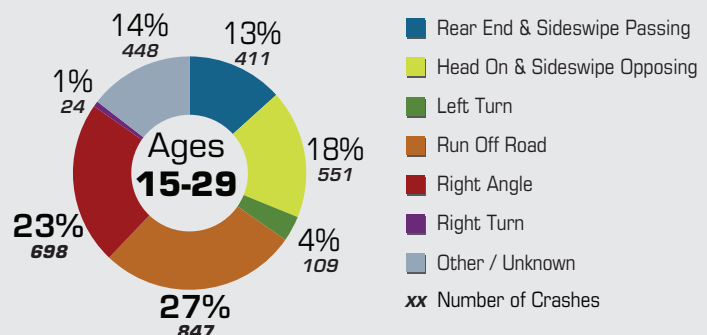
66% of younger drivers in severe crashes are **male**.



Crash Type



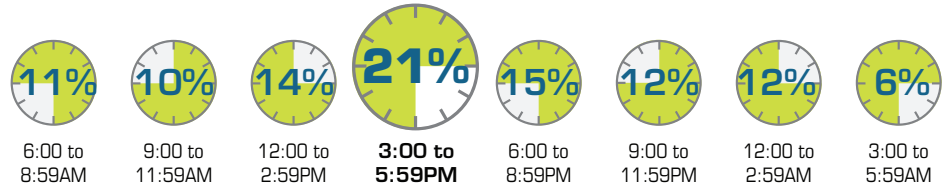
Run off road and right angle crashes are the most prevalent severe crash types for younger drivers, 27% and 23% respectively.



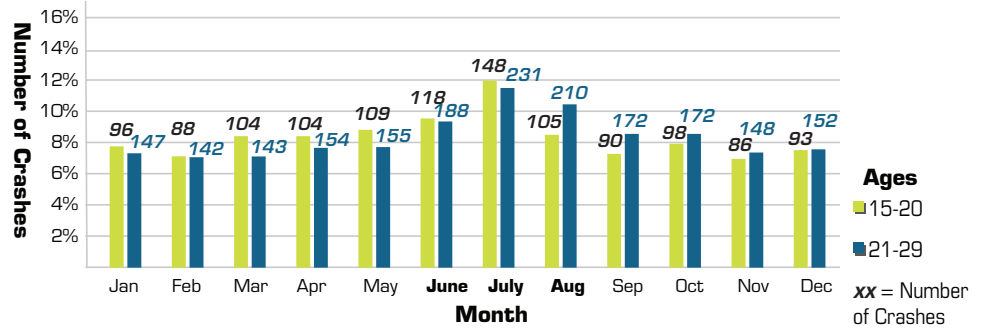
Time of Day and Month

21%

21% of severe crashes involving younger drivers occurred between the hours of **3:00 - 5:59PM**.



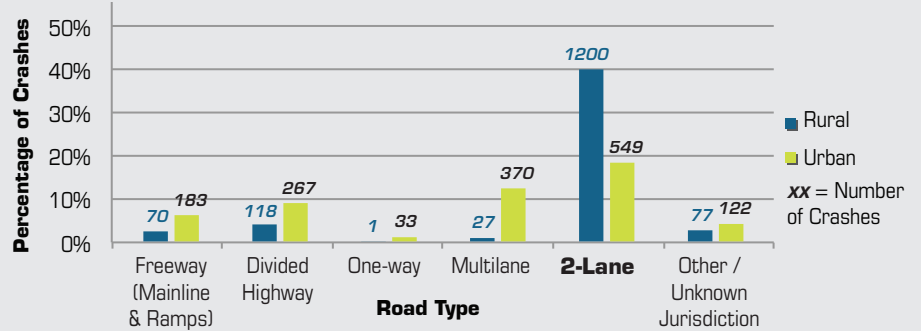
There was a slight increase in severe crashes involving younger drivers in the **summer months**, but overall, the crashes occur relatively evenly throughout the year.



Road Type

40%

40% of severe crashes involving younger drivers occur on **rural 2-lane** roadways.



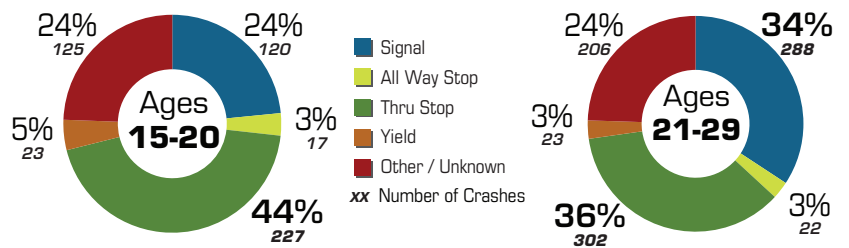
Traffic Control at Intersections

44%

44% of younger driver severe crashes at intersections for ages 15-20 occurred at **side-street stop-controlled intersections**.

34%
36%

Younger driver severe crashes at intersections for ages 21-29 occurred at **signalized and stop-controlled intersections**, 34% and 36% respectively.



Additional Contributing Factors

+

The majority of severe crashes involving younger drivers were **intersection related** or **lane departure** crashes.

