

Safe Ride News Publications

2020

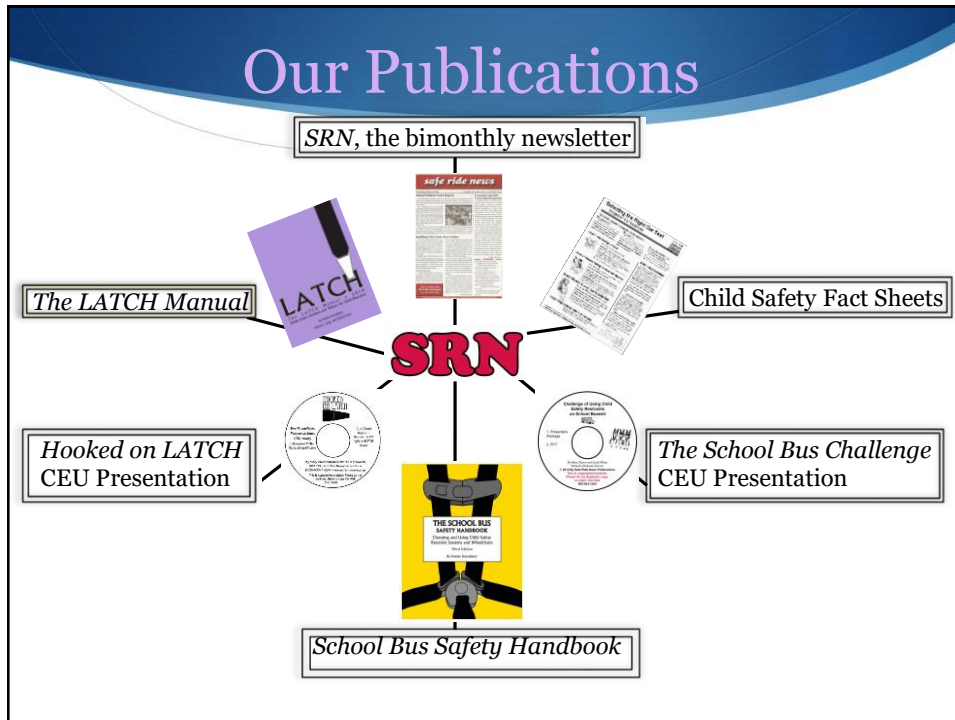
The National Child Passenger Safety Resource for
Health and Safety Professionals & Advocates



Disclosure Statement

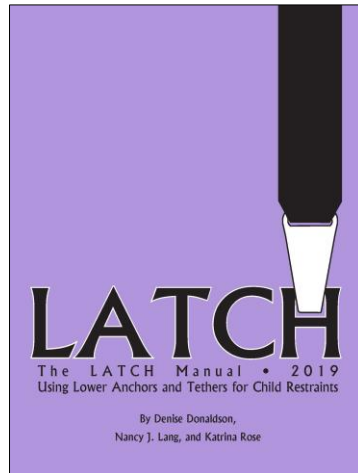
Denise Donaldson is a current member of the National Child Passenger Safety Board, but she is not representing the Board as a presenter today.





Check out WWW. SAFERIDENEWS.COM

- Completely revised.
- New look and layout.
- Order online!



2019 *LATCH Manual*

- LAVENDER
- Full of great info!
- Check out webinar at cpsboard.org
- Current through 2020



2019 *LATCH Manual*

- LAVENDER
- Full of great info!
- Check out webinar at cpsboard.org
- Current through 2020

LATCH Webinars

www.cpsboard.org



“LATCH Manual 101”

Book development and basic layout
Community Education credit



“LATCH Manual 201”

Review of technical highlights
1 CEU available, must pass quiz



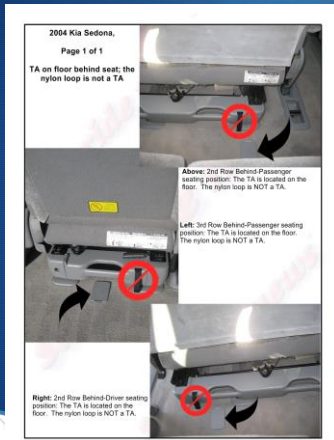
“LATCH 2019”

Learn about vehicle “bullets”
1 CEU available, must pass quiz

Sign up for email updates

**Use the Quick Link
in the footer at
www.saferidenews.com.**

The LATCH Gallery



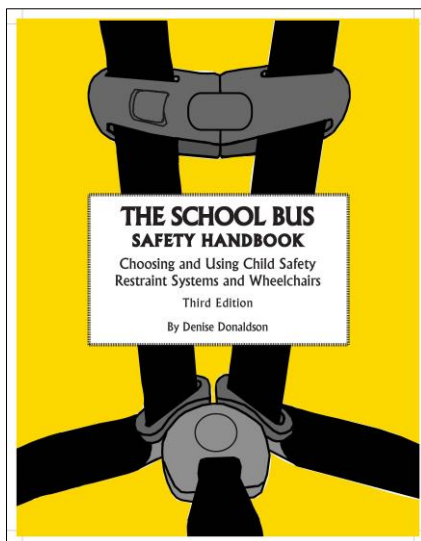
See the footer at
www.saferidenews.com



LG Sample Page: 2009 Kia Sedona

9

School Bus Safety Handbook



**ALL NEW,
3rd EDITION**

Covers CSRS and
wheelchairs on
school buses.

Subscribe to Safe Ride News!

- 🔥 *Bi-monthly*
- 🔥 *Stay in the know!*
- 🔥 *Earn 1 CEU for each year.*

Coupon Code:
MNCpst
for 10% off
through November.



Reporting CPS news for 38 years!

**Founder
Deborah Davis Stewart**

“What’s in SRN?”



Every issue:

- Recalls—CRs and cars
- Calendar of CPS events
- Resources
- Editorial

Regular features:

- New CR Update
- NHTSA/laws/policies
- Studies
- Special needs/school bus
- Programs/Conferences
- Hot topics

Recent examples:

- Dual-Latchplate Seat Belts
- Diversity, Confronting Bias
- 15-Passenger Vans
- All About Load Legs
- Belt-Shortener Refresher
- Chemicals and CRs

Contact Us

- Call us at: 800-403-1424 (Pacific Time)
- Denise and Brian: *info@saferidenews.com*
- Katrina: *katrina@saferidenews.com*

