

SOURCE: xkcd.com/2101

### Northwest Regional Crash Trends

Derek Leuer | State Traffic Safety Engineer  
 Office of Traffic Engineering  
 04/25/2023

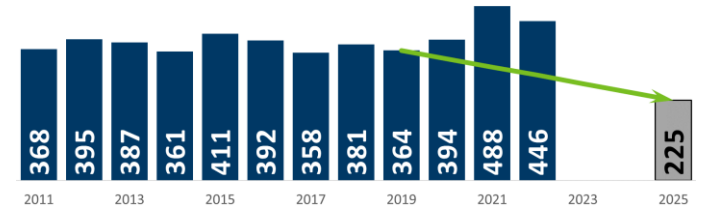


mdot.gov

### Statewide Progress Toward SHSP Goal

2022 crashes preliminary as of 04/14/2023

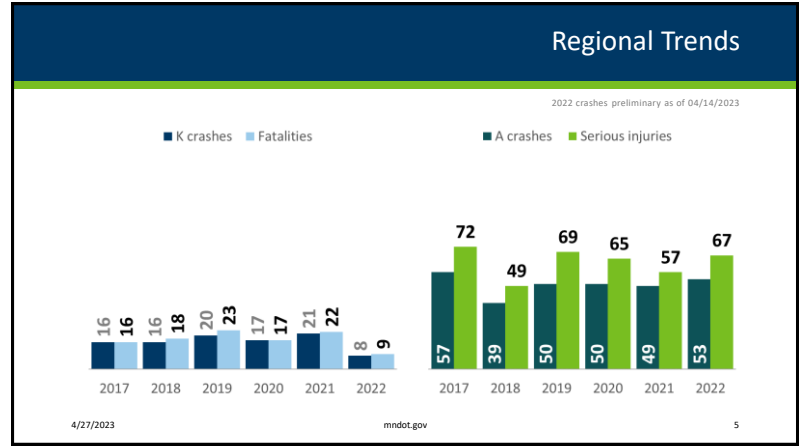
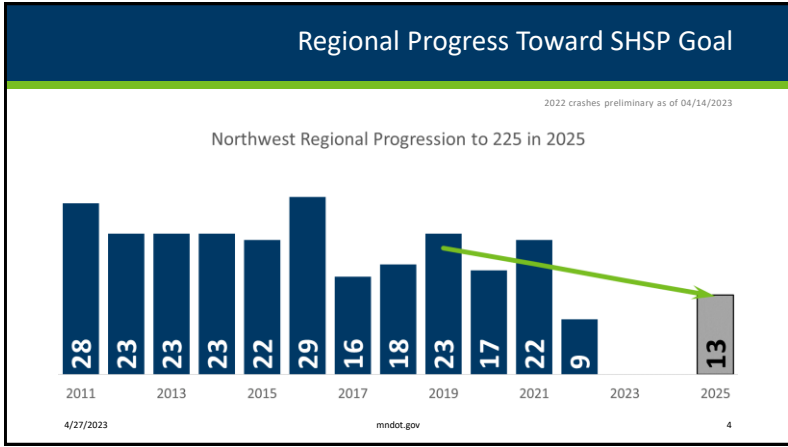
Minnesota Progression to 225 in 2025



4/27/2023

mdot.gov

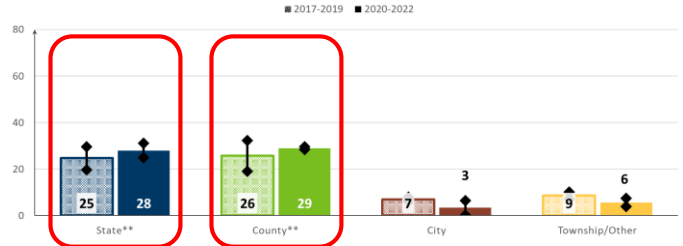
3



### Roadways | Northwest Region

2022 crashes preliminary as of 04/14/2023

Average annual fatal and serious injury crashes by roadway jurisdiction  
*\*\* denotes a percent change greater than the percent change in all fatal and serious injury crashes*



4/27/2023

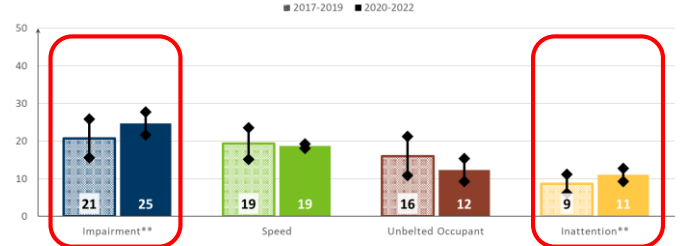
mindot.gov

6

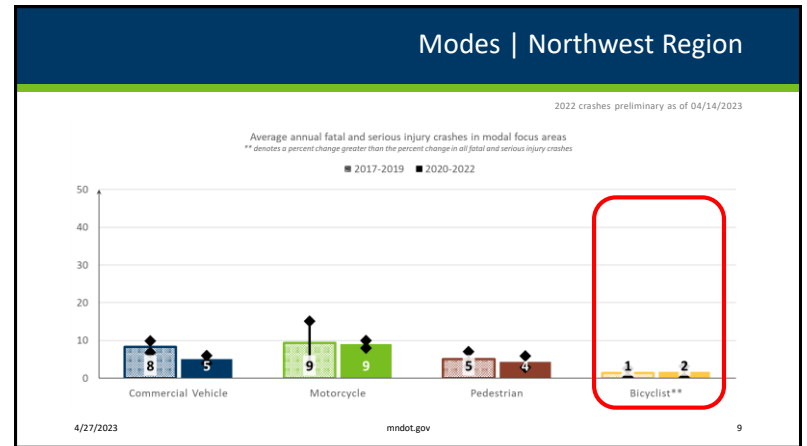
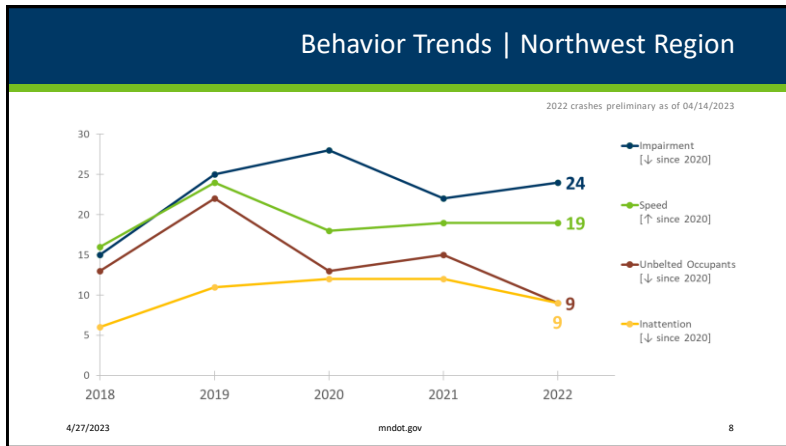
### Behaviors | Northwest Region

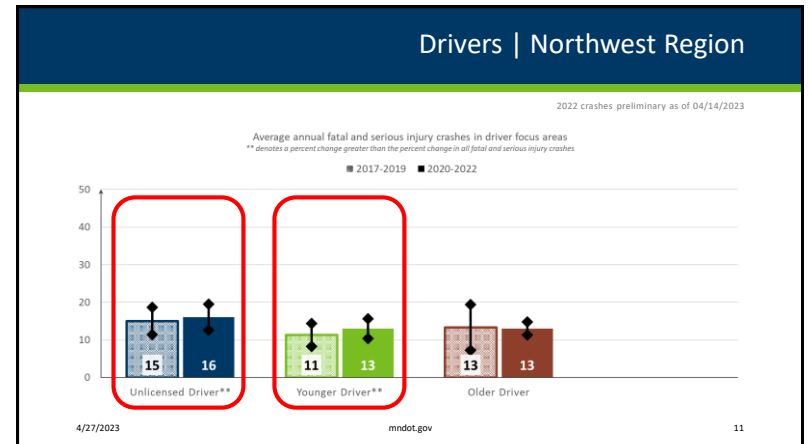
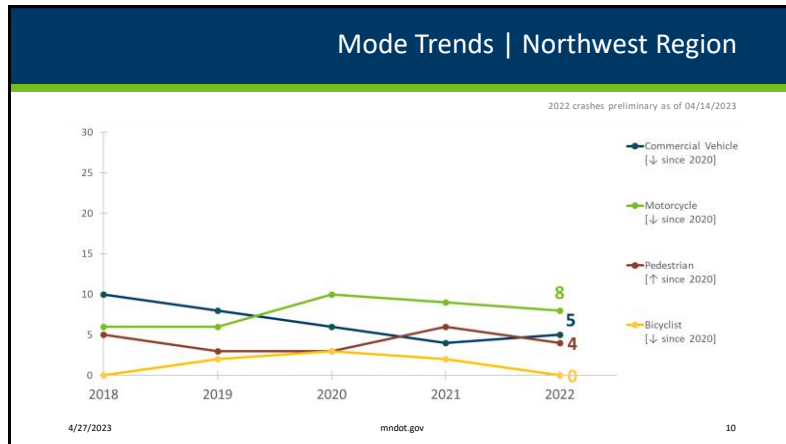
2022 crashes preliminary as of 04/14/2023

Average annual fatal and serious injury crashes in behavior focus areas  
*\*\* denotes a percent change greater than the percent change in all fatal and serious injury crashes*



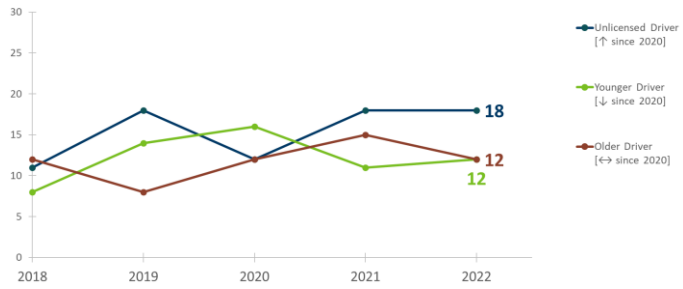
mindot.gov





### Driver Trends | Northwest Region

2022 crashes preliminary as of 04/14/2023



4/27/2023

mdot.gov

12

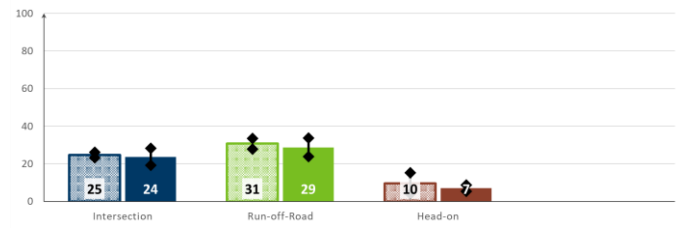
### Engineering | Northwest Region

2022 crashes preliminary as of 04/14/2023

Average annual fatal and serious injury crashes in engineering focus areas

\*\* denotes a percent change greater than the percent change in all fatal and serious injury crashes

■ 2017-2019 ■ 2020-2022

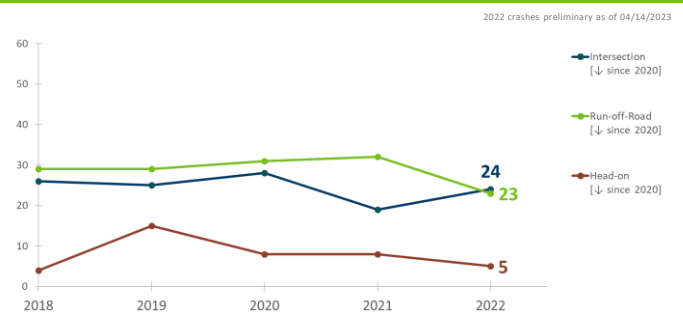


4/27/2023

mdot.gov

13

### Engineering Trends | Northwest Region

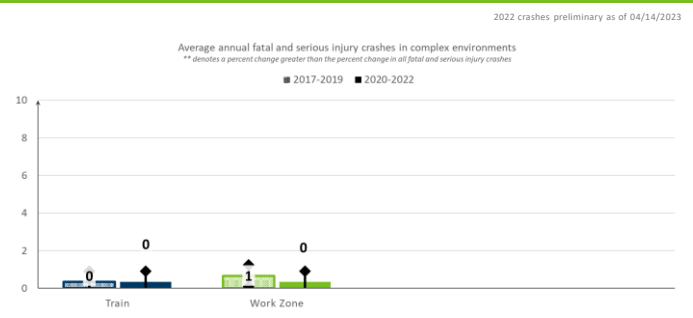


4/27/2023

mindot.gov

14

### Complex Environments | Northwest Region

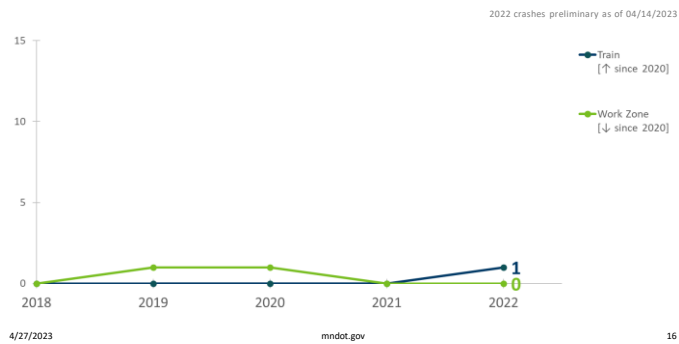


4/27/2023

mindot.gov

15

## Complex Trends | Northwest Region



## Key Takeaways | Northwest Region

- 2022 crashes preliminary as of 04/14/2023
- Fatal and serious injury crashes 2020-2022 are equal to 2017-2019
    - +0% relative to baseline
    - Traffic fatalities are down 16% while serious injuries remain same
  - Crash types greater than baseline and trending up:
    - Impairment, Inattention
    - Bicyclist
    - Unlicensed Driver, Younger Driver
  - Four counties had ZERO fatalities in 2022!
- 4/27/2023 mndot.gov 17



## Remember Our Successes!

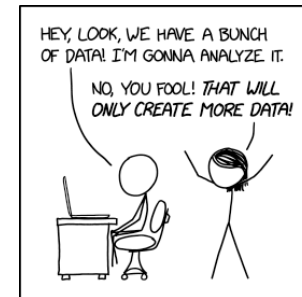
Change since pre-TZD

	Northwest Region			Statewide		
	2002	2022	% Change	2002	2022	% Change
Fatalities	<b>47</b>	<b>9</b>	<b>-81%</b>	<b>657</b>	<b>446</b>	<b>-32%</b>
Fatality rate	<b>2.42</b>	<b>0.45</b>	<b>-81%</b>	<b>1.21</b>	<b>0.78</b>	<b>-36%</b>
K crashes	<b>44</b>	<b>8</b>	<b>-82%</b>	<b>590</b>	<b>420</b>	<b>-29%</b>

SOURCE: Minnesota Crash Facts (2002) and preliminary 2022 crashes (04/14/23).

## Questions and Contact

**Derek Leuer**  
 State Traffic Safety Engineer  
 MnDOT Office Traffic Engineering  
 Derek.leuer@state.mn.us



SOURCE: xkcd.com/2582