

INTRODUCTION

Safe, Quick Clearance

Safe, quick clearance is implementing Traffic Incident Management (TIM) strategies to clear traffic incidents as safely and quickly as possible.

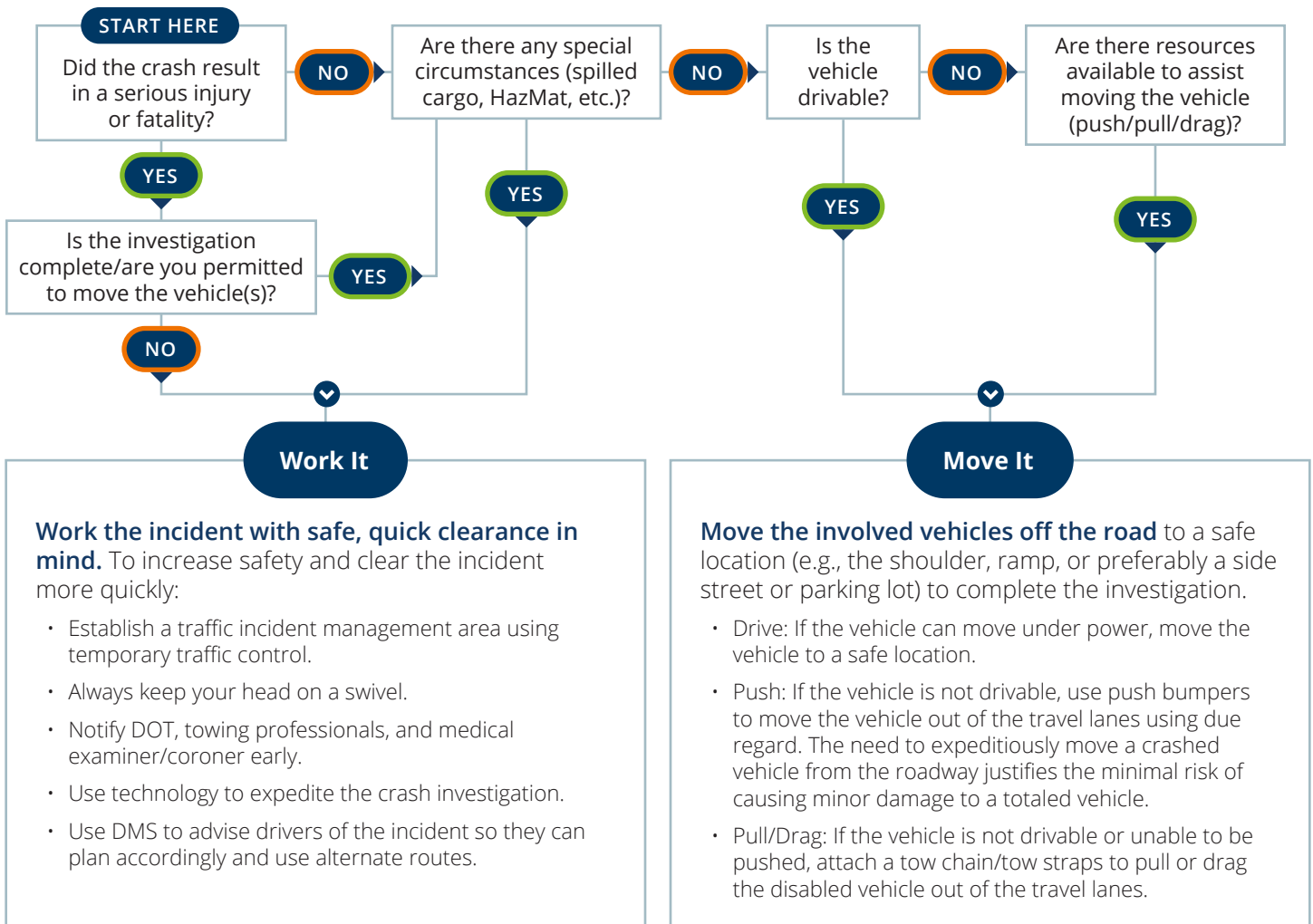
The longer responders are at the scene of a traffic incident, the higher the risk is for stuck-by incidents and secondary crashes to occur. TIM prioritizes relationships between emergency responders and stakeholders to improve communication, coordination, and collaboration to safely and quickly clear incident scenes.

Move it/Work it

Move it/Work it is a TIM strategy that authorizes emergency responders with actionable tools to quickly clear minor crashes from the roadway after driver information has been collected to conduct a crash investigation.

LEGISLATIVE SUPPORT:

A peace officer and the Department of Transportation (within the eight-county metropolitan district) has the authority to move, remove, or cause to remove obstructions from a road. Statutes that support this are: **168B.035 subd. 4** and **168B.04 subd. 2**.



How Can You Practice Safe, Quick Clearance?

Policy and Procedure

Review and update policies and procedures to incorporate TIM best practices with a focus on safe, quick clearance across all levels (incident response, communication, data/documentation).

When policies and procedures require best practices such as responder safety, quick clearance, and interoperable communications, a culture of safety is easier to achieve.

Scan the code or go online to access additional TIM resources and materials:



minnesotatzd.org/tim

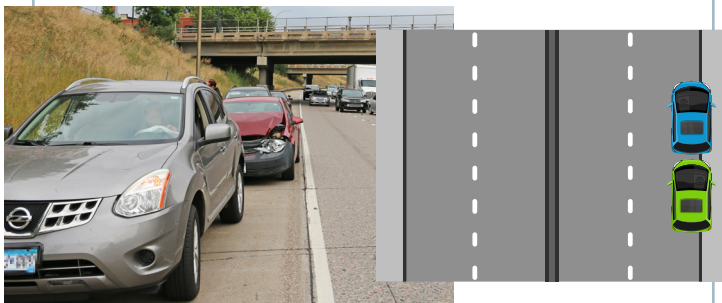
<input checked="" type="checkbox"/> TIM BEST PRACTICES TO INCORPORATE:	
<input type="checkbox"/>	Authorize the use of push bumpers or other methods for quick clearance
<input type="checkbox"/>	Integrate prompts for move it/work it into emergency communication protocols
<input type="checkbox"/>	Require responders working on a roadway to wear high visibility safety apparel
<input type="checkbox"/>	Require the use safe vehicle positioning (apparatus placement)
<input type="checkbox"/>	Immediately notify a command-level officer and RTMC of state road lane and ramp closures lasting 10 minutes or longer
<input type="checkbox"/>	Implement quick clearance standards into tow agreements

Roadside Scenario

You are a non-State Patrol agency responding to a crash on a State Highway...

SCENE DETAILS

- There are no injuries
- The vehicles involved are drivable (or movable via push-pull-drag methods)
- There are no other special circumstances.



Move It!

If you are responding to a movable incident on a State Highway, move the crash off of the highway prior to other responders arriving on the scene, whenever possible.

TIM Training: An opportunity for interagency collaboration and relationship-building. Consider TIM training for your agency and encourage partner agencies to attend. *Go online to learn more.*

Tony Kasella

Statewide TIM Coordinator Minnesota Department of Transportation

tony.kasella@state.mn.us

(651) 234-7026

minnesotatzd.org/tim/training

