

Goodbaby
International

Product Update
Fall 2023

evenflo®



cybex



evenflosales@worldsafe.net * (800) 768-6077

New Products at Booth!!



Product Name	Revolve360™ Extend Gold	Revolve360™ Slim Gold	Shyft™ DualRide™ with Carry-All Storage
MSRP	\$449.99	\$379.99	\$549.99
Rear-Facing Weight Limit	4 - 50 lbs	4 - 50 lbs	3 - 35 lbs
Additional Feature	SensorSafe™	SensorSafe™	Carry-All Storage Bag
LATCH Connector	Push-On Connectors	Push-On Connectors	Push-On Connectors
Fashion Fabrics & Finishes	Green & Gentle™	Premium	Elevated

NEW! Revolve360 Extend



Rear-Facing

- 4 – 50 lbs (1.8 – 22.6 kg)
- 17 – 48 in (43 – 122 cm)

Forward-Facing

- 22 – 65 lbs (10 – 29.4 kg)
- 28 – 49 in (72 – 124 cm)
- At least 2 years old

High Back Booster

- 40 – 120 lbs (18 – 54.4 kg)
- 44 – 57 in (112 – 144 cm)
- At least 4 years old



NEW! Revolve360 Extend



14 Position Adjustable Headrest with No Rethread Harness

Optional Head & Body Pillows

Optional Harness Covers

On the Fly Recline

Single Belt Path with One & Done Installation

Optional Removable, Reversible Leg Rest



NEW! Revolve360 Extend



Lower Anchor Weight Limits

- RF: 30 lbs (13.6 kg)
- FF: 35 lbs (15.8 kg)



SEAT BELT INSTALLATION RECOMMENDED

NEW! Revolve360 Extend



ALWAYS Tether!



Rear-Facing



Forward-Facing



NEW! Revolve360 Extend



Quick Clean Cover*



*Not available on all models.



Revolve360/Extend Line Up



Product Name	Revolve360	Revolve360 Extend	Revolve360 Extend Gold
MSRP	\$349.99	\$399.99	\$429.99
Rear-Facing Weight Limit	40 lbs	50 lbs	50 lbs
Additional Feature	●	Quick Clean Cover	SensorSafe™
LATCH Connector	Standard Hooks	Mini LATCH	Mini LATCH
Fashion Fabrics & Finishes	High Quality	Elevated	Premium

NEW! Revolve360 Extend Gold



MSRP: \$449.99

Green & Gentle



 **GREEN & GENTLE™**
ENVIRONMENTALLY FRIENDLY FABRIC
WITHOUT ADDED CHEMICAL TREATMENTS
AND FREE OF FLAME RETARDANTS

Revolve360 – Updates to Original



Updates:

- Removeable
Harness covers
- Aircraft approved
- Tether in booster mode
- Rear-Facing to 50lbs



Amherst

MSRP: \$349.99

Walmart Exclusive

**These updates are
standard on the Extend &
Slim Models**

NEW! Revolve360 Slim Convertible



Rear-Facing

- 4 – 50 lbs (1.8 – 22.6 kg)
- 17 – 48 in (43 – 122 cm)

Forward-Facing

- 22 – 65 lbs (10 – 29.4 kg)
- 28 – 49 in (72 – 124 cm)
- At least 2 years old

Functions & Installs the same Way as all other Revolve 360 models.



→ 16.7" ←



ONE-HAND, 360° ROTATION

Revolve360 Slim Line Up



Product Name
MSRP
Rear-Facing Weight Limit
Additional Feature
LATCH Connector
Fashion Fabrics & Finishes

Revolve360 Slim
\$329.99
50 lbs
●
Standard Hooks
High Quality

Revolve360 Slim with Quick Clean Cover
\$349.99
50 lbs
Quick Clean Cover
Standard Hooks
Elevated

Revolve360 Slim Gold
\$379.99
50 lbs
SensorSafe™
Mini LATCH
Premium

Introducing...

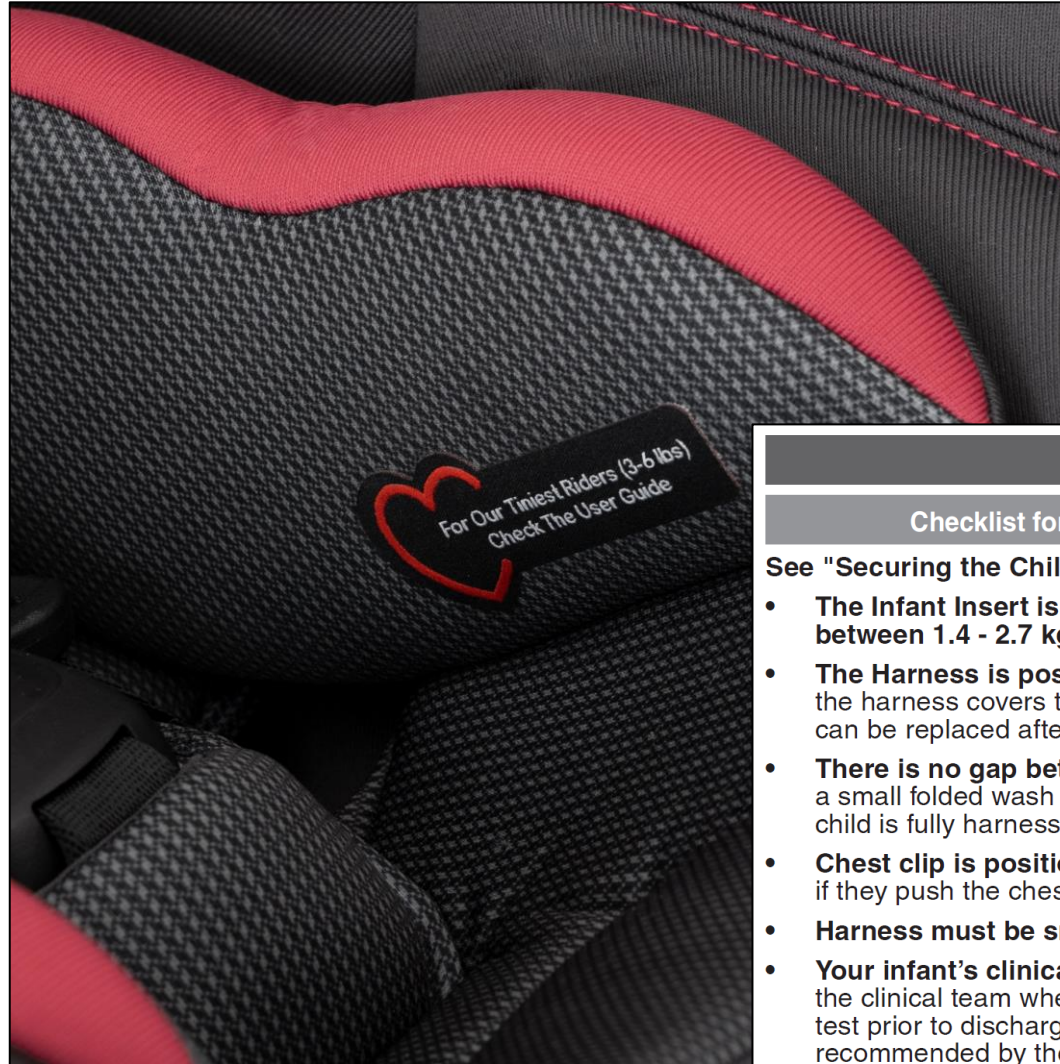


 evenflo.

SHYFT™ DUALRIDE™
INFANT CAR SEAT AND
STROLLER COMBO



NEW SHYFT™ DUALRIDE™



Tiniest Riders

*Infant insert required 3 – 6 lbs
(1.4 – 2.7 kg)*

Optional over 6 lbs (2.7 kg)

Premature Infant Use

Checklist for Premature and Low Birth Weight Infant Use

See "Securing the Child" on pgs. 115 - 127 and take note of the following:

- **The Infant Insert is positioned in the car seat and is required for infants between 1.4 - 2.7 kg (3 - 6 lbs).**
- **The Harness is positioned at or below the infant's shoulders.** Remove the harness covers to check for harness strap positioning. Harness covers can be replaced after appropriate harness height is determined.
- **There is no gap between the infant and the buckle.** If there is a gap, insert a small folded wash cloth between the buckle strap and the infant after the child is fully harnessed.
- **Chest clip is positioned at armpit level.** Harness covers must be removed if they push the chest clip down below armpit level.
- **Harness must be snug.**
- **Your infant's clinical team must approve of use and fit.** Discuss with the clinical team whether your hospital plans to conduct an angle tolerance test prior to discharge. See pgs. 9 - 10 for more details on this testing recommended by the American Academy of Pediatrics.

NEW SHYFT™ DUALRIDE™



Removal from Base –
With or Without Wheels



SHYFT™ DUALRIDE™ Line Up

All models Come with SensorSave
Technology



Product Name	Shyft™ DualRide™	Shyft™ DualRide™ with Carry-All Storage	Gold Shyft™ DualRide™
MSRP	\$499.99	\$549.99	\$599.99
Weight Limit	3 - 35 lbs	3 - 35 lbs	3 - 35 lbs
Storage	●	Carry-All Storage Bag	Carry-All Storage Bag
LATCH Connector	Push-On Connectors	Push-On Connectors	Push-On Connectors
Fashion Fabrics & Finishes	High Quality	Elevated	Premium with Vegan Leather Handle
Warranty	90 Days	90 Days	Lifetime



Transportation for Kids with Disabilities

Medical Waiver



LIABILITY WAIVER

WHEREAS, Federal Motor Vehicle Safety Standard 213 ("FMVSS 213") establishes design and dynamic performance requirements for child restraint systems and booster seats (singularly, "Car Seat," collectively, "Car Seats"); and

WHEREAS, FMVSS 213 does not address the requirements of Car Seats for children with specialized medical needs; and

WHEREAS, Evenflo Company, Inc ("Evenflo") manufactures Car Seats that comply with FMVSS 213.

THEREFORE: I/We, _____ and (if applicable) _____, have requested that Evenflo Company, Inc. ("Evenflo") advise me/us in the selection of an Evenflo Car Seat for my/our minor child, _____ (the "Child"), who has specialized medical needs.

I/We will provide Evenflo with any and all information provided by the Child's physician or other medical providers regarding special considerations or accommodations for vehicular travel with the Child.

I/We understand that these medically-recommended accommodations for travel may be periodically modified as the Child develops and we shall inform Evenflo of any such modifications before further use of any Evenflo Car Seat to ensure that Evenflo can modify its recommendations, if necessary. I/We acknowledge that circumstances may arise in which Evenflo is unable to recommend a Car Seat or adaptations for the Child sufficient to make motor vehicle travel reasonably safe for the Child.

I/We understand that Evenflo requires that the evaluation recommended by the American Academy of Pediatrics ("AAP") be conducted for all infants born earlier than 37 weeks and all newborn infants who weigh less than 2.26 kg (5 lbs) at birth before their first car trip to check for breathing difficulties or heart rate problems when traveling in a rear-facing Car Seat.

I/We understand that the AAP recommends that appropriate hospital staff observe the Child in a Car Seat for a period of 90 to 120 minutes or the duration of travel, whichever is longer, before leaving the hospital in a Car Seat.

I/We understand that Evenflo personnel will use best efforts to recommend an Evenflo Car Seat and any adaptations of that Car Seat for the Child that help to minimize risk, dangers and hazards associated with the Child's travel in a motor vehicle.

I/We understand that use of the Car Seat and any adaptations recommended by Evenflo will not eliminate the possible risks, dangers, and hazards, including the risk of severe or fatal injury to the Child, associated with the Child's use of a Car Seat.



Accordingly, I/we elect to use the Evenflo Car Seat recommended by Evenflo and any adaptations thereof recommended by Evenflo. I/We voluntarily assume full responsibility for any risk of loss or personal injury, including serious injury and/or death, that the Child may sustain resulting from such use. For the good and valuable consideration provided by Evenflo, I/we hereby:

1. WAIVE, RELEASE, FOREVER DISCHARGE AND COVENANT NOT TO SUE Evenflo and all of its officers, directors, agents, servants, employees, representatives, independent contractors, volunteers, affiliates, parent companies, successors and assigns (collectively, the "Evenflo Released Parties") from any and all claims, causes of action, demands, damages, liabilities, expenses, suits, actions and/or judgments whatsoever that may arise out of or in connection with the Child's use of the recommended Evenflo Car Seat and any adaptations thereof recommended by Evenflo. This includes, without limitation, all claims for personal or bodily injuries, death or property damage, except to the extent caused by the Evenflo's gross negligence or intentional misconduct.

2. DEFEND, HOLD HARMLESS AND INDEMNIFY the Evenflo Released Parties from all claims, demands, causes of action, damages, liabilities, expenses (including, without limitation, any attorney's fees and costs), suits, actions and/or judgments made or brought by any party that may arise out of or in connection with the Child's use of an Evenflo Car Seat or any adaptations thereof recommended by Evenflo. This includes, without limitation, all claims for personal or bodily injuries, death or property damage, except to the extent caused by Evenflo's gross negligence or intentional misconduct.

IN SIGNING THIS LIABILITY WAIVER, I/WE ACKNOWLEDGE AND REPRESENT THAT:

I/we have read the foregoing; I/we am/are authorized to sign it; and no oral representations, statements, or inducements, apart from the foregoing, have been made; and I/we am/are at least eighteen (18) years of age and fully competent. I/we hereby further agree that this document shall be construed in accordance with the laws of the State of Ohio and that if any part of this Liability Waiver is determined to be illegal, unenforceable or in conflict with any law governing this Liability Waiver, the validity of the remaining portions shall not be affected thereby.

**THIS IS A RELEASE OF LEGAL RIGHTS.
READ AND UNDERSTAND BEFORE SIGNING.**

Signature

Signature

Printed Name

Printed Name

Date

Date

Use of the Merritt Chest Clip Guard



Chest Clip Guard

- Limits child's ability to push down chest clip
- "Locks" chest clip – opens with a provided plastic key or any key
- Requires car seat with splitter plate
- Replaces existing chest clip

<https://escapeproof.com/>

Use of the Merritt Chest Clip Guard



APPROVAL
applies to the
Chest Clip
Guard ONLY.

NOT approved
for the Buckle
Guard



SureRide/Titan 65

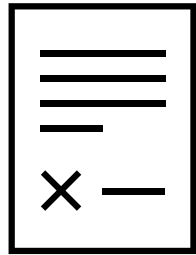


Sonus 65



Maestro Sport

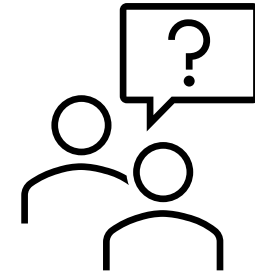
Use of the Merritt Chest Clip Guard



Waiver &
Acknowledgement Form



Devices Purchased
Separately



Sarah.haverstick@goodbabyint.com

OR

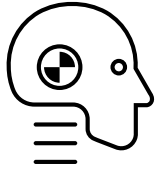
evenflosales@worldsafe.net



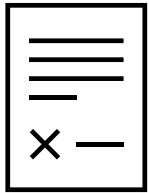
<https://www.evenflo.com/>

<https://escapeproof.com/>

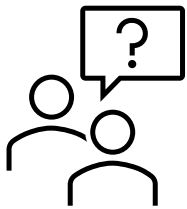
Use of Booster Mode with Harness



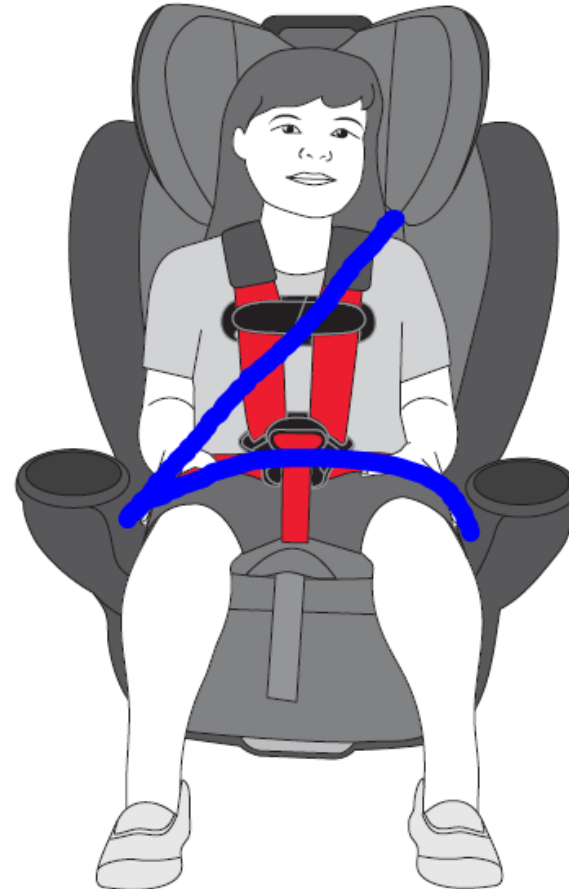
Testing in progress



Will require medical waiver



Sarah.haverstick@goodbabyint.com



SENSORSAFE™

MAKING CAR SEATS SMARTER AND CHILDREN SAFER

Four Instant Alerts to Your Phone Via Bluetooth:

- 1. Chest Clip Unbuckled**
- 2. Temperature too hot or too cold**
- 3. Child Seated for Too Long**
- 4. Child Left Unattended**

GET SAFETY ALERTS IN REAL TIME FROM YOUR CHILD'S CAR SEAT



COMING SOON:

SensorSafe Technology on ALL Evenflo Infant Rear-facing only seats





HOW SENSORSAFE WORKS



Download the free
SensorSafe App



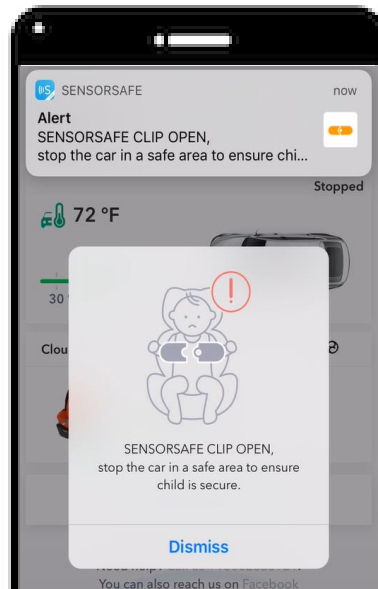
Buckle Chest Clip to
Engage SensorSafe



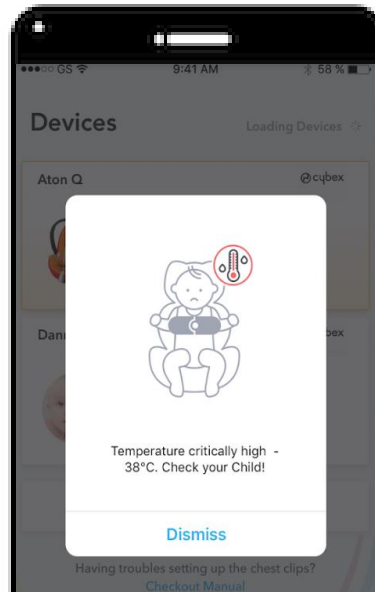
Safety Alerts are
Provided Directly to
Caregivers Phone



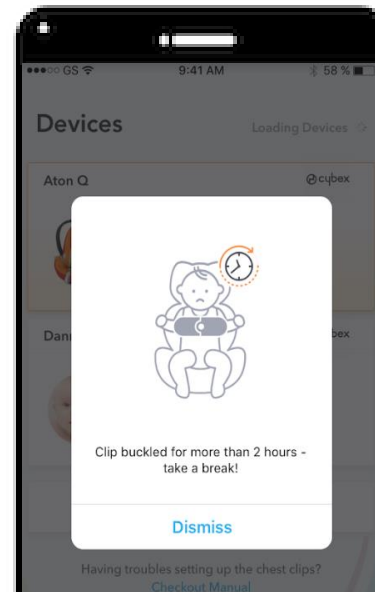
1. Clip becomes unbuckled
while driving



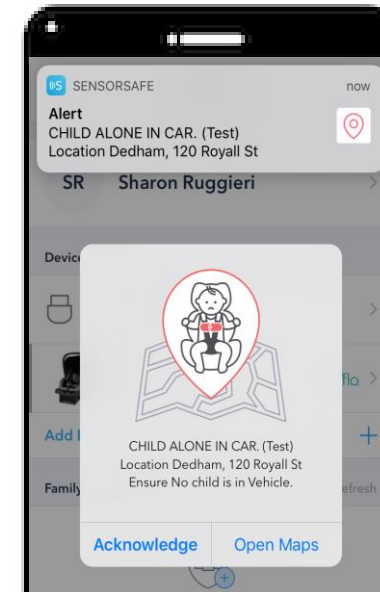
2. Vehicle interior too hot or
too cold



3. Time to take a break



4. Child alone in vehicle



4 Types of
safety
alerts:

Accessories – All Evenflo Accessories have been crash tested with all Evenflo Car Seats



Back Seat Organizer



Kick Mat



Back Seat Mirror



Seat Protector



Weather Shield

For Evenflo ONLY car seats, Strollers & Travel Systems



Cling Shade



Arm Cushion



Travel Bag



Starter Kit

Product Disinfecting



*Can I disinfect my
Evenflo car seat?*



What: 70% isopropyl alcohol



How: spray or wipe to dampen, but not
soak the surface



Where: fabric, harness, buckle, plastic
parts, foam and labels

Institutional Sales



Evenflo is Proud to Support The CPS Community!

evenflo Institutional Car Seat Composite
factory Select - Features May Vary

Infant Carrier

- First Choice 2360 3" 58 Infant 5-22 lbs, no base or canopy **Made in the U.S.A.**
- Nurture 2362 2" 58 Infant 5-22 lbs, NEW carry handle design, base & canopy **Made in the U.S.A.**
- Embrace 35 237 2" 58 Infant 4-35 lbs, w/Up Front Adjust & Recline Leg **Made in the U.S.A.**
- Embrace 35 LX 2382 2" 58 Infant 4-35 lbs, Lock-off base, multiple crotch buckle adjust

Convertible

- Titan 50 SureRide 237 2" 58 Rear Facing 5-40 lbs, Forward 22-65 lbs, W/ body & head pillows & 8 heights
- SecureKid 2382 2" 58 Convertible 5-65 lbs, RF to 40 lbs, 40" RF to 40" FF
- Tribute 5 238 2" 58 Convertible 5-40 lbs, RF to 40 lbs, 4 harness heights
- Triumph LX 2382 2" 58 Convertible, Infinite Slide Harness 5-65 lbs, RF to 40 lbs

All-In-One

- Symphony 2382 2" 58 All-In-One, 5-40 lbs Rear Facing, 22-65 lbs Convertible, 10 Harness Seats Made, Infinite Slide Harness, Suspend System **Made in the U.S.A.**

No Back Booster

- AMP 233 2" 58 No Back Belt-Positioning Booster, 40-110 lbs, Four Pack **Made in the U.S.A.**
- AMP 233 2" 58 RSD No Back Belt-Positioning Booster, 40-110 lbs, Single Pack

Booster

- Chase 2382 2" 58 booster 22-110 lbs, w/ FH harness to 40 lbs, 5" Height, Chase 233 2" 58 NO Harness High Back Booster, 40-110 lbs
- SecureKid 2382 2" 58 22-65 lbs w/harness, 40-110 lbs without harness
- AMP 23 2" 58 High Back Belt-Positioning Booster, 40-110 lbs, 5" Height - ASSEMBLED
- Maestro 23 2" 58 22-50 lbs w/harness, 40-110 lbs without harness, 40-110 lbs
- Triumph LX 2382 2" 58 3-in-1 Booster, 22-65 lbs harness, 40-110 lbs booster, HB & NB booster

Private and Confidential www.evenflo.com Patsy Pilcher * Eve Miller * 800-768-6077 office * 800-382-4565 fax * evenflosales@worldsafe.net

Car Seat Models	Model #	Carton
**First Choice Infant 5-22 lbs, no base or canopy	3604198	4
**Nurture Infant 5-22 lbs, NEW carry handle design, base & canopy	3622198	1
Embrace 35 Infant 4-35 lbs, w/ Up Front Adjust, with Recline Leg	3152198	1
Embrace 35 LX Infant 4-35 lbs, w/ plush pad with head pillow	31521561	1
LiteMax 35 Infant 4-35 lbs, w/lock-off base, multiple crotch buckle adjust - ~SHIPPING Dec 2016~	3051198	1
**SureRide/ Titan 65 Convertible 5-65 lb w/ body & head pillows	3712198	2
Titan 50	3472198	2
**Tribute 5 Convertible 5-40 lbs, RF to 40 lbs, 4 harness heights	3812198	2
**Triumph LX Convertible, infinite slide harness 5-65 lbs, RF to 40 lbs.	38231167	1
booster	34511557	1
Express	3062198	2
**SecureKid Booster 22-65 lb w/ harness, 40-110 lb. without harness	3081198	2
**Maestro Booster 22-50 lb w/ harness, 40-110 lb w/o harness 57" ht.	3102198	2
**Maestro Booster without harness, 40-110 lb. 57" height	3112198	2
**Transitions 3in1Booster, 22-65lbs harness, 40-110lbs booster, HB & NB booster	34421029	1
**Chase No Harness High Back Booster, 40-110 lb	3431198	2
**AMP High Back Booster, 30-110 lb. 57" Height - Assembled	3192198	2
**AMP No Back Belt-Positioning Booster, 40-110 lb.	3414198	4
**AMP (red) No Back Belt-Positioning Booster, 40-110 lb.	34111679	1
**Bulk Locking Clips - regular (1 carton minimum)	20506970	50

Dedicated Personnel Including:

- Sales
- Customer Service
- Engineers

evenflosales@worldsafe.net

- **Safety Advocate**
 - Sarah Haverstick, CPST-I
 - Sarah.haverstick@goodbabyint.com
 - 937.415.3114
- **Institutional Sales (Evenflo)**
 - Patsy Pilcher/Eve Miller
 - evenflosales@worldsafe.net
 - 1.800.768.6077
- **Evenflo ParentLink**
 - 1.800.233.5921
- **CYBEX Consumer Care**
 - 1.877.242.5676



Evenflo CPS Support Website
<https://www.safetymadeeasier.com/>

